

cover 51.10 m 0.3 combo switch 160.84
m 1.0 light switch 83.31# m 1.0 dimmer
switch 54.59# m 1.0 wiper switch
87.71# m 1.0 ignition switch 74.14 cyl
& keys 80.70 m 0.5 column assy 560.52
m 1.5= tube 45.13 m 2.3 clamp 11.40 m
2.3 bolt 2.77 upper bracket 183.31 m
1.7 mainshaft 211.06 m 2.5 bushing
3.77 bearing 5.03# snap ring .77# tilt
lever 31.87 m 1.3 condenser 252.49 m
1.3 cushion 3.50 dehydrator 68.68 m
0.7 bracket 1.77 compressor 619.41 m
1.5 clutch 195.92 m 0.5 hub 98.64# m
0.5 rotor 131.77# m 0.5 clutch coil
46.17# m 0.5 discharge hose 44.17 m 0.5
suction hose 55.95 m 0.5 cap .33 ac
hose 14.11 m 0.5 pressure switch 37.15
air cleaner 306.66 m 0.5 cover 204.12#
m 0.2 air mass sensor 151.10 m .03 o-
ring 1.03 element 15.46# m 0.2 air
cntrl valve 82.97 m 0.3 air inlet duct
57.45 m 0.2 inlet duct 40.38 m 0.2
upper resonator 44.50 m 0.2 air hose



CCC PATHWAYS®

Network Installation and Update Guide

249.560 m 3.4 baffle plate 21.69 dip-
stick 9.57 oil filter 7.34 m 0.3 oil
pump 151.09 fuse & relay box 690.88
bolt .63# brace 9.09 fuse box 117.06#
upper clmn cover 39.13 m 0.3 lower clmn
cover 51.10 m 0.3 combo switch 160.84
m 1.0 light switch 83.31# m 1.0 dimmer
switch 54.59# m 1.0 wiper switch
87.71# m 1.0 ignition switch 74.14 cyl



**CCC Pathways Network Installation and Update Guide
version 4.4
Copyright 2006 by CCC Information Services Inc.**

All rights reserved. No part of this publication may be reproduced, stored in a retrieval system, or transmitted, in any form or by any means, electronic, mechanical, recording, or otherwise, without the prior written permission of CCC Information Services Inc.

Limits of Liability/Disclaimer of Warranty

The authors and publisher of this book have used their best efforts in preparing this book. CCC and the authors make no representation or warranties with respect to the accuracy or completeness of the contents of this book, and specifically disclaim any implied warranties of merchantability or fitness for any particular purpose, and shall in no event be liable for any loss of profit or any other commercial damage, including but not limited to special, incidental, consequential, or other damages.

Trademarks

Pathways® and Redefining the Industry Together™ are trademarks of CCC Information Services Inc. Microsoft® Windows is a registered trademark of Microsoft Corporation. All Rights Reserved. All brand names and product names used in this book are trademarks, registered trademarks, or trade names of their respective holders. CCC is not associated with Microsoft or any other product or vendor mentioned in this book.

CCC Information Services Inc.
444 Merchandise Mart
Chicago, Illinois 60654-1005

for CCC Technical Support, call (800) 637-8511

Or visit our Web site at www.cccis.com and email us.

Table of Contents

Introduction	1
Installing CCC Pathways on a Network	3
Installing the CCC Pathways Program Disc	4
Installing Your Workstations - Client Setup	11
Installing the CCC Pathways Data Disc	17
Installing the CCC Pathways Graphics Disc	31
Installing the CCC Pathways Additional Data and Graphics Disc.....	37
Updating CCC Pathways on a Network	39
Updating the CCC Pathways Program Disc	39
Updating Your Workstations - Client Setup	45
Updating the CCC Pathways Data Disc	47
Updating the CCC Pathways Graphics Disc	62
Updating the CCC Pathways Additional Data and Graphics Disc	69

Introduction

This document reflects the necessary guidelines for running the CCC Pathways family of software products using Windows™ workstations.

Note For the purposes of this book, the term “Windows” will refer to all approved Microsoft® Windows®-based operating systems (e.g., Windows® 2000, Windows® XP, etc.).

Because CCC is constantly working to ensure that Pathways works with the most up-to-date operating systems available, we maintain a separate document, updated quarterly, that lists the compatible operating systems (as well as required hardware). This document, *CCC Technical Requirements*, available on the CCC Pathways Resource Kit (in the Documentation Library topic) and on www.cccis.com under Support. Be sure your operating system is compatible with the version of Pathways that you are using.

CCC is aware that there are many possible client/server combinations available when setting up a network, this document will cover only some of the most common ones. For further information, please consult your network technician. These instructions are specific to setting up the CCC Pathways family of products, and related hardware and software.

The CCC Pathways family of products supported in a network environment include:

- CCC Pathways Appraisal Solution
- CCC Pathways Estimating Solution
- CCC Pathways Independent Appraiser Solution

Warning! Setting up a network requires a complete understanding of networking theory, as well as a thorough knowledge of the Windows Server and Workstation operating systems. We strongly urge you to enlist the services of a qualified vendor or consultant to install and set up your network.

CCC will answer general questions about running CCC Pathways on a network. If you require extensive consultation on your network configuration or the Windows operating system, you will need to enlist the services of a qualified network technician. CCC is not responsible for the setup or configuration of your internal network systems.

Note CCC Pathways will run successfully on a Windows peer-to-peer network. However, we recommend setting up your network with no more than three clients for optimal results. If you exceed five clients, we recommend moving to a dedicated Windows or Novell server.

CCC publishes a series of Network Configuration guides, which can be found on www.cccis.com under Support and on the CCC Pathways Resource Kit (in the Documentation Library topic). Please refer to the appropriate chapter in the applicable guide to set up, and configure your server and workstations. This must be completed before installing CCC Pathways.

Installing CCC Pathways on a Network

Note You must have configured your network per the appropriate chapter in the applicable Network Configuration Guide for Pathways prior to beginning this installation.

Before you begin, make sure that you log on to the server or connected workstation as the administrator or with administrator rights, and that your screen displays the Windows Desktop. Also, be sure that no applications are running in the background.

The CCC Pathways program is delivered on multiple compact discs (CDs): CCC Pathways Program Disc, CCC Pathways Data Disc, and CCC Pathways Graphics Disc. If you have purchased Chief Vehicle Specifications, you will receive the Additional Data and Graphics Disc.

The CCC Pathways Resource Kit, is also included in your original package.

The CCC Pathways Program Disc

To install the Pathways program, you'll run the CD labeled CCC Pathways Program Disc first. When you begin receiving your monthly update CDs from CCC, you will only receive the Program CD if there is a significant upgrade to the program, or if your monthly update requires one.

You will run the Program CD to install CCC Pathways. Then you'll run Client Setup from the installed location.

The CCC Pathways Data Disc

After you install the Program Disc, you'll run the Data Disc. This will install all of the databases that you have paid for. You will receive a new Data Disc with each Pathways monthly update.

Note The date of the Data Disc will be printed on the estimate, so that anyone reading the estimate can determine which monthly data was used.

The CCC Pathways Graphics Disc

Graphics are delivered monthly. You can install the graphics from the CD to your hard drive (after you have completed installing running the Program and Data Discs), or, if you are a stand-alone user, you can access graphics directly from the CD to use during the estimating process.

The CCC Pathways Additional Data and Graphics Disc

If you subscribe to Chief Vehicle Specifications, you will receive the Additional Data and Graphics Disc. You will be prompted to run this CD after you run the Graphics Disc.

Before You Begin

Before you begin installing CCC Pathways, you'll need to make sure of a few things concerning your computer and its operating system.

- Make sure that you have a compatible operating system. For information on compatible operating systems, be sure to check the *CCC Technical Requirements document*, available on the CCC Pathways Resource Kit (in the Documentation Library topic) and on www.cccis.com under Support.
- Depending on your operating system (e.g., Windows XP), you may be required to have Administrator rights to perform this installation. If you require Administrator rights but do not have them, contact your Network Administrator.
- Make sure that your display is set to 800 x 600 pixels or greater, and that your colors are set to 256 or higher.

Important! You cannot install the program if your display is set to less than 800 x 600 pixels, or if your colors are set to less than 256. To change your display and/or your colors, select Start > Settings > Control Panel. Then select Display. The Display Properties sheet appears. Select Settings, and adjust the Desktop Area field so that your display is set to 800 x 600 pixels or greater (e.g., 1024 x 768 pixels) and your colors are set to 256 or higher.

Installing the CCC Pathways Program Disc

As you run this installation, Setup will guide you along. Make sure you read all instructions carefully as the installation progresses.

Read all installation screens!

To install CCC Pathways Program

- 1 Insert the diskette labeled CCC Pathways Estimating Solution Installation into your floppy drive. Then, insert the CD labeled CCC Pathways Program Disc into your CD-ROM drive.

Important! If your computer cannot have a CD-ROM and a floppy drive attached at the same time, you must attach the floppy drive and copy the files from the diskette to the root of your C drive (or any local fixed drive named C, or D). Then detach your floppy drive, attach your CD-ROM drive, and continue with the installation.

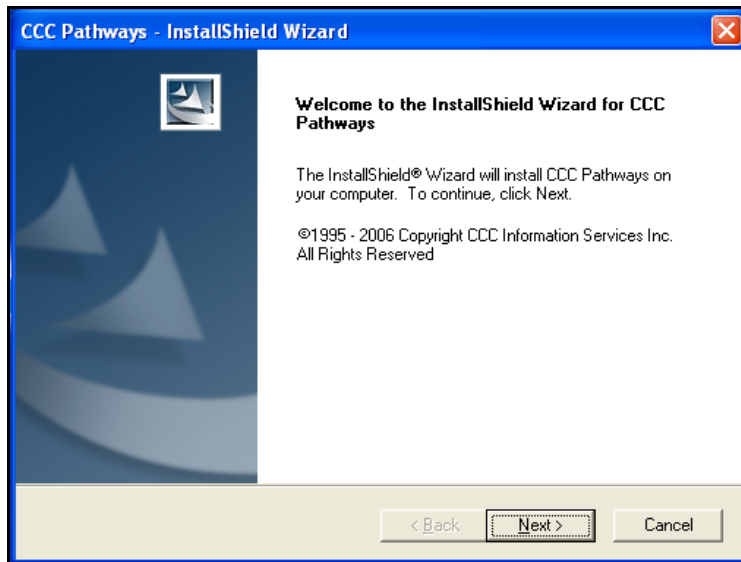
- 2 Open the Start menu, and select the Run option.
- 3 In the Open field type **d:\setup.exe** and press enter. (If your CD-ROM drive is assigned a letter other than d, replace d with the appropriate letter.)

Important! The source file location (e.g., D:\) used during the installation of CCC Pathways must remain consistent for all subsequent updates.

- 4 The program will display the message, "Preparing to Install."

Important! Depending on your operating system (e.g., Windows XP), you will be required to have Administrator rights to perform this installation. If you do not have Administrator rights, contact your Network Administrator.

- 5 The program checks your operating system. If you are attempting to install on an unapproved operating system (e.g., Windows 95), installation will stop.
- 6 The program checks your display. If your display is set to less than 800 x 600 pixels, or if your colors are set to less than 256, installation will stop. You will be asked to reset your display and/or your colors before you can begin the installation again.
- 7 The program displays the Welcome to InstallShield Wizard for CCC Pathways screen. Read the screen. When you are ready to continue with the installation, select the Next button.



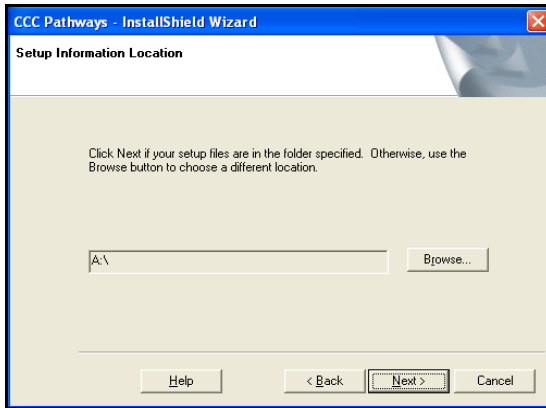
Welcome screen

- 8 After you select the Next button from the Welcome screen, Setup scans your computer to see if you already have CCC Pathways loaded on your system.
- 9 If Setup does not find CCC Pathways on your system, it displays the Setup Information Location dialog box. If you haven't already inserted your installation diskette in your floppy drive, do it now.

Then make sure that the floppy drive specified on the screen matches the letter of your system's floppy drive. The default drive is A, but you can select a different location using Browse button.

Note If you received your Setup files via a CD-ROM or as an email attachment, use the Browse button to indicate the location of those Setup files.

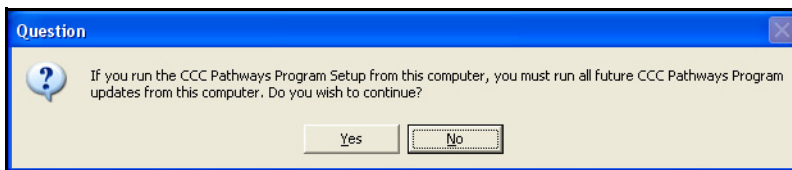
- 10 When the location is correct, click OK.



Setup Information Location dialog box

Note For help using the Setup Information Location dialog box, click the Help button on the screen..

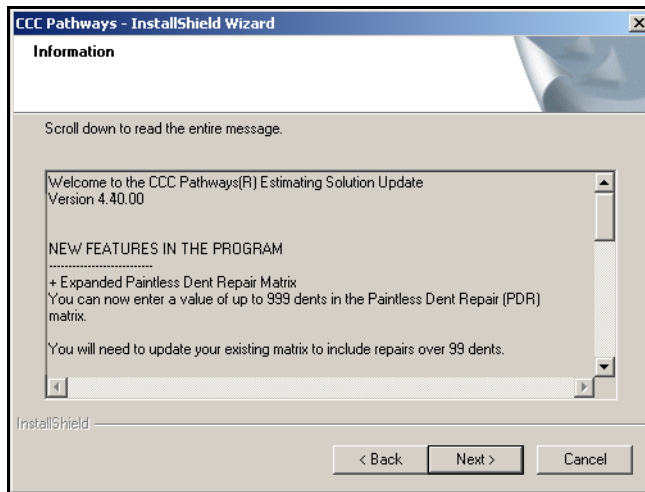
A message appears informing you that if you run the CCC Pathways Setup from this computer, you must run all future CCC Pathways Program updates from this computer. You are asked if you wish to continue. If this is the computer from which you want to run all future updates, click Yes. If not, click No and restart the installation on a different computer.



Message

Information Screen

The program displays the Information screen, containing the Readme file. The Readme file contains important information about new program features. We suggest you read this file now.

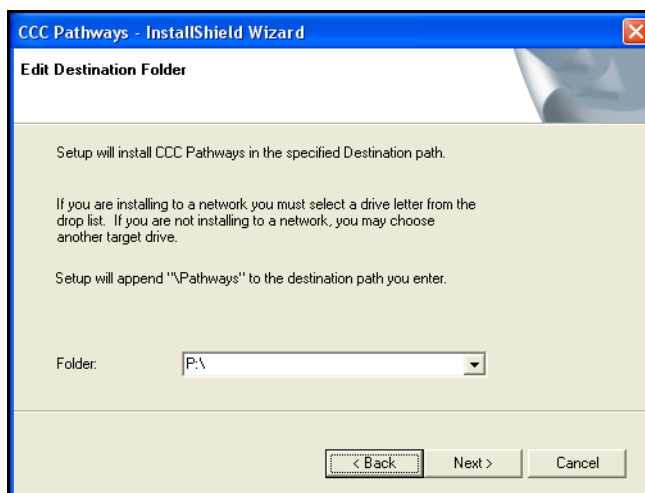


Information screen

When you are finished reading, click Next.

Installation Destination Directory

The Installation Destination Directory screen appears. Here, Setup lets you determine the folder where CCC Pathways will reside. Select the drive letter that was mapped during the network configuration (e.g., P:\). You must have the drive letter mapped before you can proceed. (For more information on mapping the drive letter, see the appropriate Client Configuration chapter in the applicable Network Configuration Guide.)

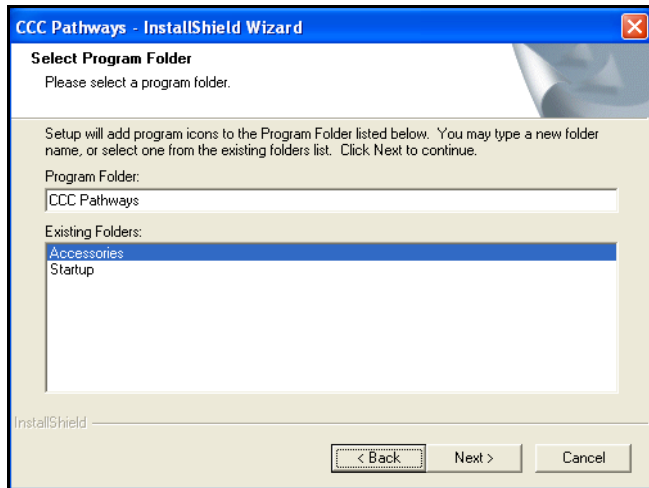


Installation Destination Directory

Unless it is imperative that you change it, it is a good idea to leave the default folder alone. If you do want to enter a folder name of your own choosing, click the Edit button to get the Edit Destination Folder dialog box, where you can specify a different location for the folder.

Note The CCC Pathways program must reside in a folder named “Pathways.” Setup will append “Pathways” to any folder name that you enter. For help using the Edit Destination Folder dialog box, click the Help button on the screen.

- 11 When you are satisfied with your directory choice (either the default, or the one you selected on the Edit Destination Folder screen), click Next.
- 12 A screen appears asking you to confirm the creation of the new folder. Click Yes.
- 13 The Select Program Folder screen appears. Use this screen to select the program folder for Pathways icons. We suggest you leave the default (i.e., the Pathways folder). Click Next.



Select Program Folder screen

- 14 The program starts copying the files to your hard drive. The Setup Status screen keeps you informed as to the progress of the installation.
- 15 You will see an information screen reminding you: “After installing the Pathways Network Server Program, please run the Pathways Client setup program from the server location CLSETUP folder. Then run the Pathways Data installation from the Pathways Data CD.”
- 16 When the installation is finished, you will see the InstallShield Wizard Complete screen.

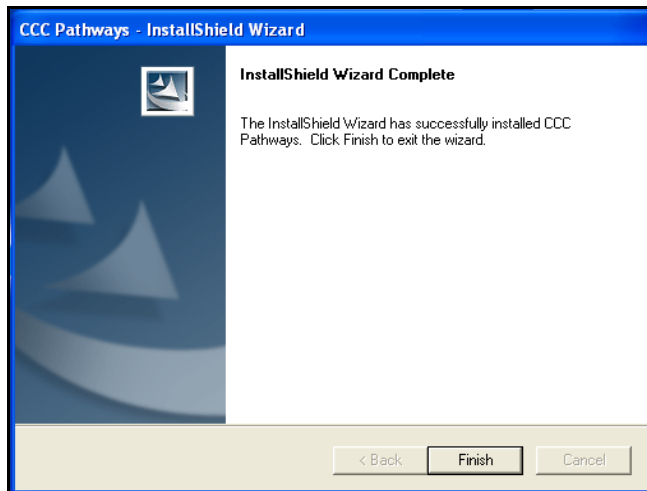
InstallShield Wizard Complete

Depending on your requirements, Setup may or may not need you to reboot your computer at this point. Before you continue with the installation, you'll need to remove any disks from their drives.

If Setup does need you to reboot, you will see the InstallShield Wizard Complete dialog box with two buttons.

- **Yes, I want to restart my computer now**—This choice is automatically selected and will restart your computer immediately. Click on Finish.
- **No, I will restart my computer later**—This choice allows you to reboot at a more convenient time. Select it, then click on Finish.

Note If Setup has indicated that you need to reboot, then you must reboot before starting Client Setup, CCC Pathways, or before installing the CCC Pathways Database. Setup will not remind you to reboot if you have chosen to reboot later.



Installation Wizard Complete

If Setup does *not* need you to reboot, you will see the InstallShield Wizard Complete dialog box without the reboot options. Select Finish.

Note After you have installed the Program Disc, you must perform Client Setup at each workstation before you install the Data Disc and Graphics Disc.

Installing Your Workstations - Client Setup

Important! All workstations must be mapped to the shared folder on the server with the same drive letter. This is the same drive letter you chose when installing CCC Pathways to the server (e.g., P:\).

After you have installed the CCC Pathways Program Disc on the server, follow these steps to install the necessary files to the hard drive of each of the workstations attached to the network.

Note You must perform this procedure at each workstation where you will be running CCC Pathways before you install either the Data Disc, the Graphics Disc, or the Additional Data and Graphics Disc.

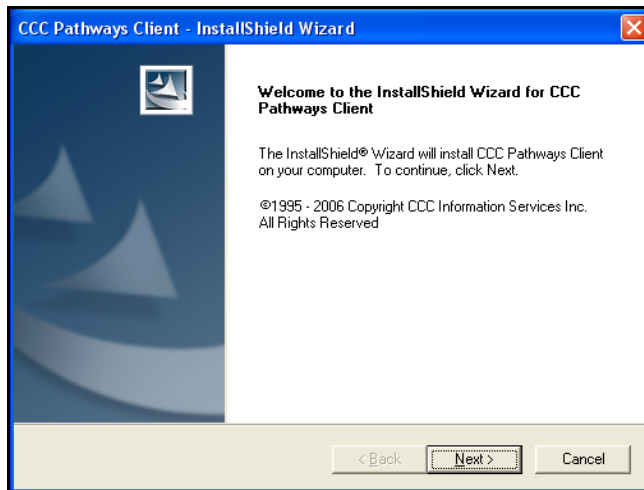
To install your workstation-client setup

At the workstation, make sure the Windows desktop is displayed.

- 1 Open the Start menu. Select the Run option. In the Open field type the following command: **P:\pathways\clsetup\setup.exe** (If you have mapped to a letter other than P, substitute that letter.) The program will display the message “Preparing to Install.”

Important! If your operating system (e.g., Windows XP) requires you to have Administrator rights to install this program, and you do not, you will not be able to proceed. Contact your Network Administrator.

- 2 The program checks your operating system. If you are attempting to install on an unapproved operating system (e.g., Windows 95), installation will stop.
- 3 The program checks your display. If your display is set to less than 800 x 600 pixels, or if your colors are set to less than 256, installation will stop. You will be asked to reset your display and/or your colors before you can begin the installation again.
- 4 The program displays the Welcome to InstallShield Wizard for Pathways Client screen. Read the screen. When you are ready to continue with the installation, select the Next button.



Client Setup Welcome screen

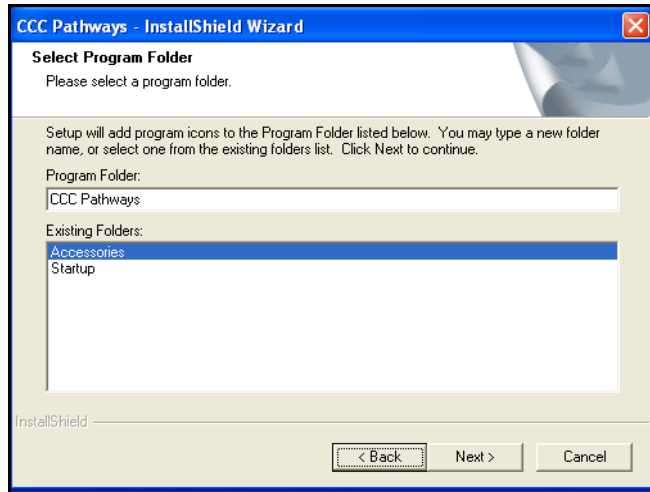
- 5 After you select the Next button from the Welcome screen, Setup checks your computer to see if you already have CCC Pathways loaded on your server. If Setup does not find Pathways on your server, you will see an error message and Client Setup installation will end.
- 6 The Edit Destination Folder screen appears. Select the location that Pathways will use to store files on your local workstation (e.g., C:\).

Unless it is imperative that you change it, it is a good idea to leave the default folder alone. If you do want to enter a folder name of your own choosing, click the Edit button to get the Edit Destination Folder dialog box, where you can specify a different location for the folder.

Note Setup places workstation-specific files in a folder named “Pathways\Local.” Setup will append “Pathways\Local” to any folder name that you enter. For help using the Edit Destination Folder dialog box, click the Help button on the screen.

Important! CCC Pathways requires full access rights to the local Pathways folder, all subfolders, and all files. Some operating systems (e.g., Windows XP) may require that you configure these security settings manually. See the “Configuring Local Security” section at the end of this chapter for instructions.

- 7 When you are satisfied with your directory choice (either the default, or the one you selected on the Edit Destination Folder screen), click Next.
- 8 A screen appears asking you to confirm the creation of the new folder. Click Yes.
- 9 The Select Program Folder screen appears. Use this screen to select the program folder for Pathways icons. We suggest you leave the default (i.e., the Pathways folder). Click Next.



Select Program Folder screen

- 10 The program starts copying the files to your specified drive. The Setup Status screen keeps you informed as to the progress of the installation.
- 11 When the installation is finished, you will see the InstallShield Wizard Complete screen.

After the Installation

You can create an icon that will let you open the CCC Pathways program from your Windows desktop.

To create a desktop icon for CCC Pathways

- 1 Select Start > Programs > CCC Pathways.
- 2 Right-click on Pathways. From the menu that appears, select Send To > Desktop (create shortcut).
- 3 A Shortcut dialog box appears asking if you want the new shortcut placed on your desktop. Click OK.
- 4 An icon labeled Pathways will appear on your Windows desktop.

When you want to launch CCC Pathways, simply click on your Pathways desktop icon.

Configuring Local Security Settings

In order for CCC Pathways to function correctly, Full Access Rights to the local Pathways folder and all subfolders need to be granted. The default security settings for Windows XP Professional/Home Edition are only acceptable to run Pathways while the user is logged on under a local Administrator account. To configure local security settings on Windows

XP Professional that will allow Restricted Users to run Pathways, follow the instructions below:

Note Windows XP Home Edition limits user access to security settings that need to be modified in order for Pathways to run under a Restricted User account. Due to this limitation, CCC will only support Pathways on Windows XP Home Edition while running under a local Administrative account.

Disable Simple File Sharing for NTFS

One of the many new features that Microsoft has developed for Windows XP Professional is Simple File Sharing. Just as the name implies, Simple File sharing attempts to make file sharing as easy as possible. And although Simple File Sharing is sufficient for the average home user, it doesn't offer accessibility to the NTFS level of security needed for Pathways configuration, and therefore needs to be disabled. The Disable Simple File Sharing feature does not function on Windows XP Home Edition.

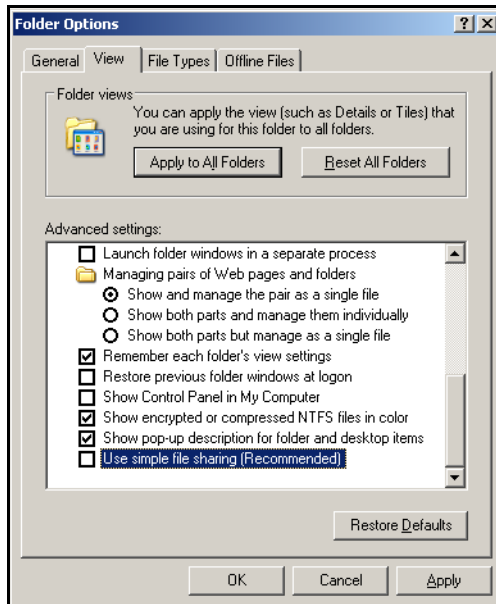
Note NTFS security settings for XP Professional are only an issue if Pathways local or program files will be on a drive formatted with the NTFS file system.

To determine if a drive is formatted with NTFS file system, follow these steps:

- 1 Click Start > My Computer.
- 2 Right-click the drive you want to check, and select Properties.
- 3 The file system type will be displayed on the General tab.

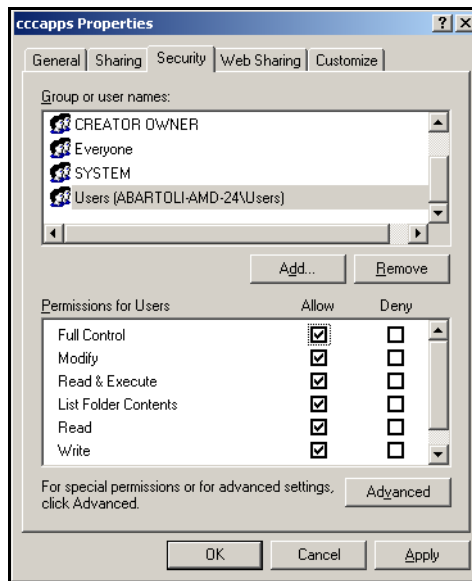
To disable Simple File Sharing, follow these steps:

- 1 Click Start > My Computer.
- 2 Click the Tools menu item at the top of the window, and select Folder Options.
- 3 On the View tab, in the Advanced Settings box, un-check the Use Simple File Sharing check box, and then click OK.



To grant access rights to the local Pathways folder

- 1 Using a method of your choice, browse to the local Pathways folder. (Usually on the root of your C:\ drive.)
- 2 Right-click on the Pathways folder, and select the Sharing and Security option.
- 3 Click the Security tab, and then select the Users group in the Groups or User Names box.



- 4 In the Permissions for Users box, populate all of the check-boxes under the Allow column and make certain that none of the Deny boxes are populated.
- 5 Click OK.

Installing the CCC Pathways Data Disc

The CCC Pathways Data Disc installs all of the database information you need to create estimates and supplements using CCC Pathways. Depending on how your system is set up, these databases may include MOTOR, Aftermarket, Reconditioned, Optional OEM, Tire, and RACEG.

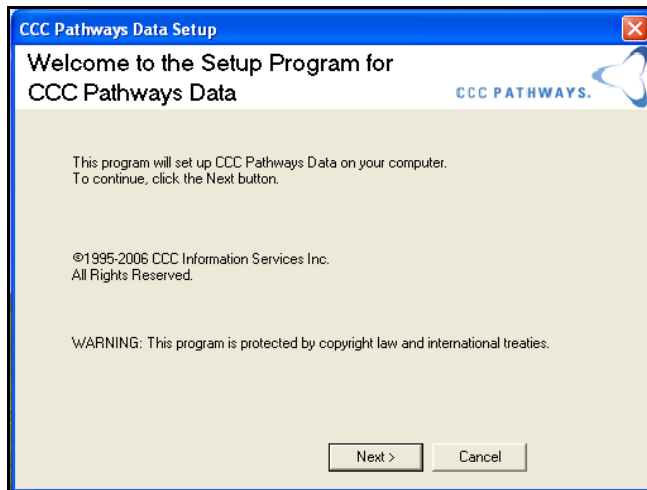
During the Database installation, you will specify a state, a region, and vendors for Aftermarket parts, Reconditioned parts, and Optional OEM parts. CCC Pathways will remember these each time you update or reload your data.

You will receive a new CCC Pathways Data Disc each month, as part of the CCC Pathways Monthly Update program.

Note The date of the Data Disc will be printed on the estimate, so that anyone reading the estimate can determine which monthly data was used.

To install CCC Pathways Database

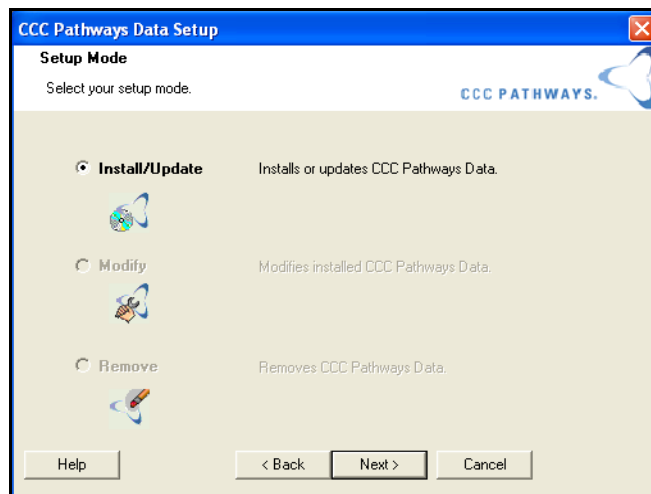
- 1 Insert the CD labeled CCC Pathways Data Disc into your CD-ROM drive.
- 2 Open the Start menu, and select the Run option.
- 3 In the Open field type **d:\setup.exe** and press enter. (If your CD-ROM drive is assigned a letter other than d, replace d with the appropriate letter.)
- 4 The program checks to make sure you have already run the CCC Pathways Program Disc. If you have not, you will see an error message, you will be prevented from continuing with the installation of the Database.
- 5 The program checks to make sure that CCC Pathways is not running. If the program is running, you will get an error message that automatically ends the setup program when you click OK. Close CCC Pathways, and restart the Pathways Data Disc installation.
- 6 The program displays the Welcome to Setup Program for CCC Pathways Data screen. Read the screen, and when you are ready to continue with the installation, select the Next button.



Welcome to Setup Program for CCC Pathways Data screen

Setup Mode

The Setup Mode screen displays. Install/Update is pre-selected for you. Click Next.



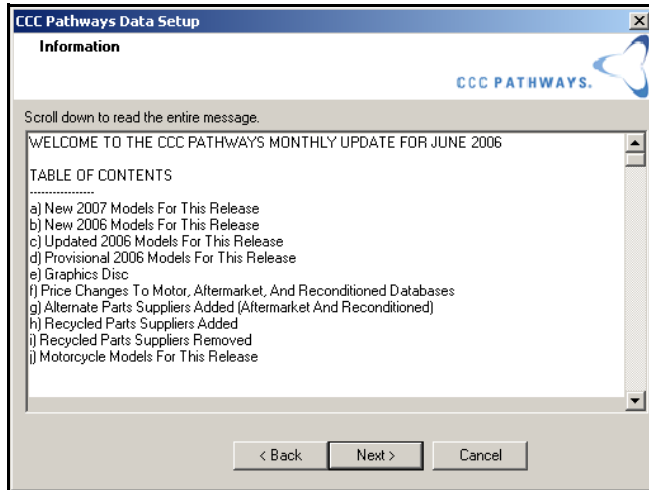
Setup Mode - Install/Update

Information Screen

The program displays the Information screen, containing the Readme file. The Readme file contains important information:

- updated list of vehicle models in the release
- alternate parts suppliers added (both aftermarket and reconditioned)

- recycled parts suppliers added and deleted,
- newly added or updated Motorcycle models
- Chief Frame Specification information

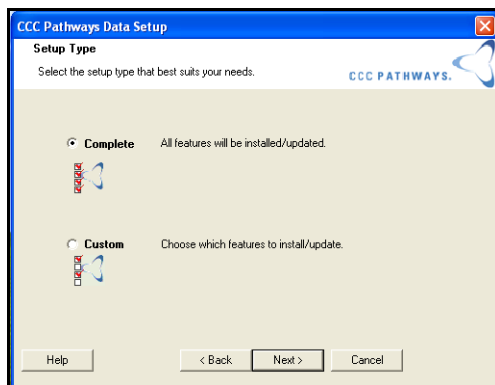


Information screen

We suggest you read this file now. When you are finished reading, click Next.

Setup Type

At this point in the installation process, the Setup Type screen appears, and you'll be asked whether you want a Complete or a Custom installation. Choose the setup type that best suits your needs, and click Next.

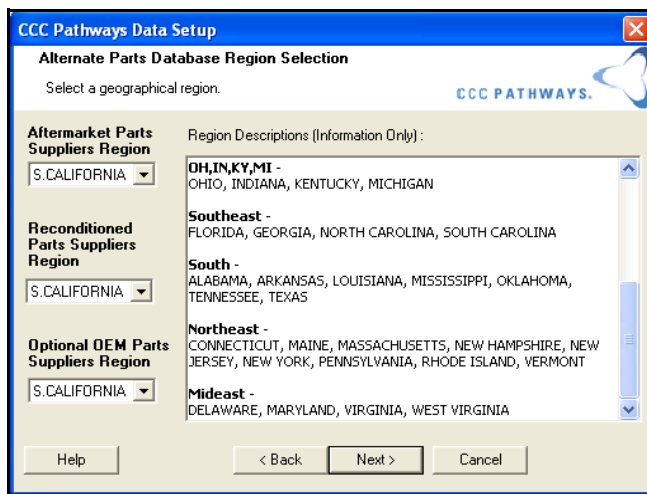


Setup Type - Complete

- **Complete** - This type of installation will include the complete versions of all databases to which you have subscribed. This is the installation we recommend you choose.
- **Custom** - This type of installation lets you choose which databases (from those to which you have subscribed) you want to install. This installation is recommended for advanced users.

The Complete installation

If you have purchased the Aftermarket Parts Suppliers database, the Reconditioned Parts Suppliers database, and/or the Optional OEM parts database then the program will display the Alternate Parts Database Region Selection screen.

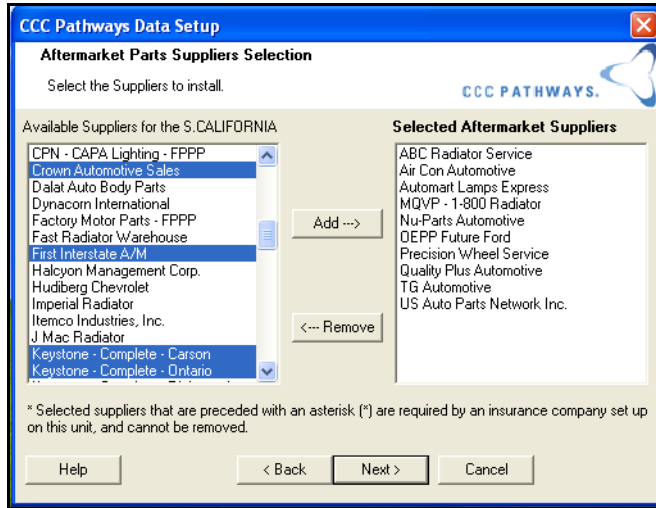


Alternate Parts Database Region Selection

Note If you have not purchased either the Aftermarket database, the Reconditioned database, or the Optional OEM database, when you elect to do a Complete installation you will see the Ready to Install/Update CCC Pathways Data screen.

- 1 Select a region from the Aftermarket Parts Suppliers Region droplist. (This droplist will only be visible if you purchased the database.)
- 2 Select a region from the Reconditioned Parts Suppliers Region droplist. (This droplist will only be visible if you purchased the database.)
- 3 Select a region from the Optional OEM Parts Suppliers Region droplist. (This droplist will only be visible if you purchased the database.)
- 4 Read the text in the Alternate Parts Database Region Selection descriptions. Verify that your state appears in the Region. Then click Next.

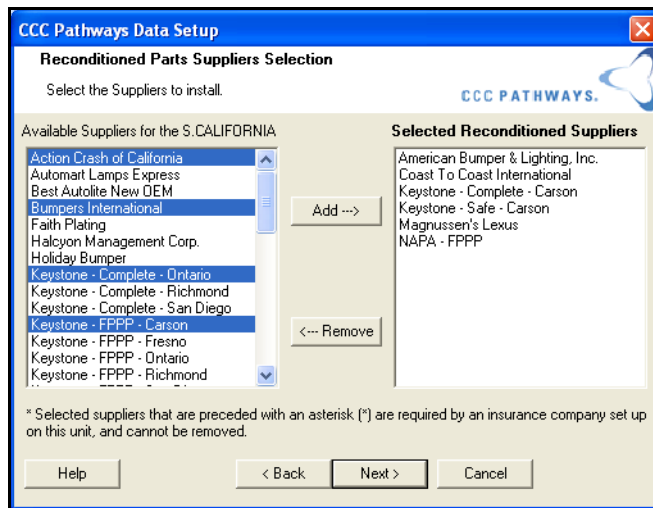
If you have purchased the Aftermarket Parts database, the program will display the Aftermarket Parts Suppliers Selection screen.



Aftermarket Parts Suppliers Selection screen

- 5 Highlight a supplier from the Available Suppliers for the Region list (The name of the region is determined on the Alternate Parts Database Region Selection screen.). You can highlight multiple suppliers by holding down your Ctrl key and clicking on each supplier.
- 6 Click the Add button to move your selection(s) into the Selected Aftermarket Suppliers list.
- 7 Repeat the process for any additional suppliers you want to select.
- 8 If you select a supplier by mistake, highlight the supplier in the Selected Aftermarket Suppliers list, and click the Remove button to de-select the supplier.
- 9 When you see all your selected suppliers in the Selected Aftermarket Suppliers list, click Next.

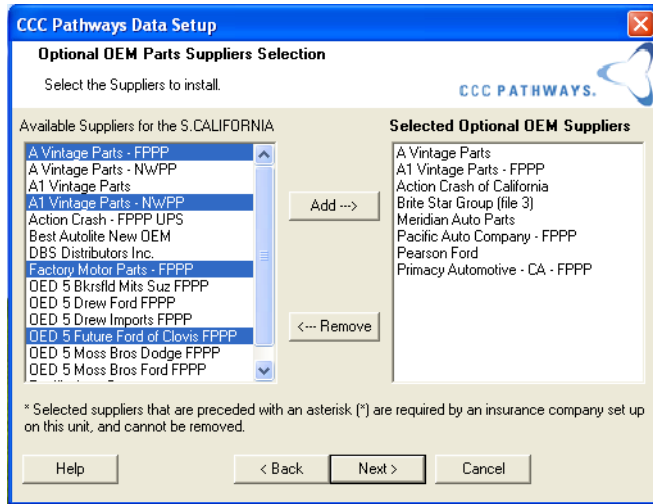
If you have purchased the Reconditioned Parts database, the program will display the Reconditioned Parts Suppliers Selection screen.



Reconditioned Parts Suppliers Selection

- 10 Highlight a supplier from the Available Suppliers for the Region list (The name of the region is determined on the Alternate Parts Database Region Selection screen.). You can highlight multiple suppliers by holding down your Ctrl key and clicking on each supplier.
- 11 Click the Add button to move your selection(s) into the Selected Reconditioned Suppliers list.
- 12 Repeat the process for any additional suppliers you want to select.
- 13 If you select a supplier by mistake, highlight the supplier in the Selected Reconditioned Suppliers list, and click the Remove button to de-select the supplier.
- 14 When you see all your selected suppliers in the Selected Reconditioned Suppliers list, click Next.

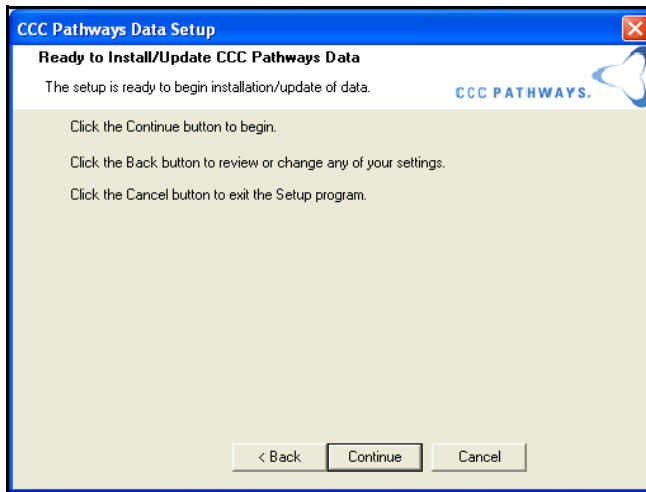
If you have purchased the Optional OEM database, the program will display the Optional OEM Parts Suppliers Selection screen.



Optional OEM Parts Suppliers Selection screen

- 15 Highlight a supplier from the Available Suppliers for the Region list (The name of the region is determined on the Alternate Parts Database Region Selection screen.). You can highlight multiple suppliers by holding down your Ctrl key and clicking on each supplier.
- 16 Click the Add button to move your selection(s) into the Selected Optional OEM Suppliers list.
- 17 Repeat the process for any additional suppliers you want to select.
- 18 If you select a supplier by mistake, highlight the supplier in the Selected Optional OEM Suppliers list, and click the Remove button to de-select the supplier.
- 19 When you see all your selected suppliers in the Selected Optional OEM Suppliers list, click Next.

- 20 The Ready to Install/Update CCC Pathways Data screen appears. Click Continue.

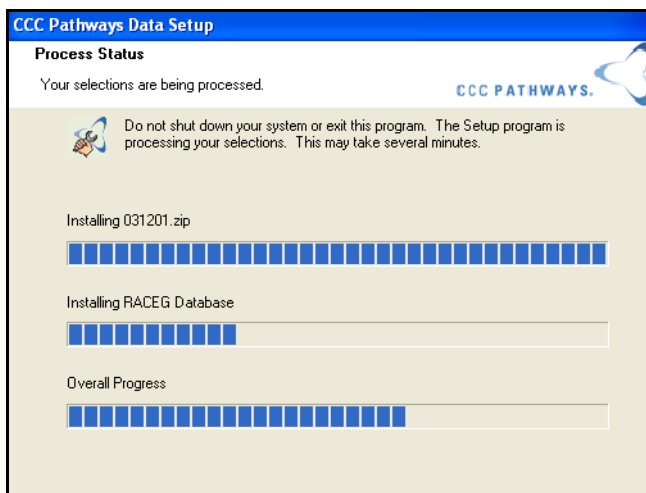


Ready to Install/Update CCC Pathways Data screen

Important! If you do not have enough disk space to complete the installation, you will see the Data Setup Failed screen. The message will notify you of the amount of disk space required.

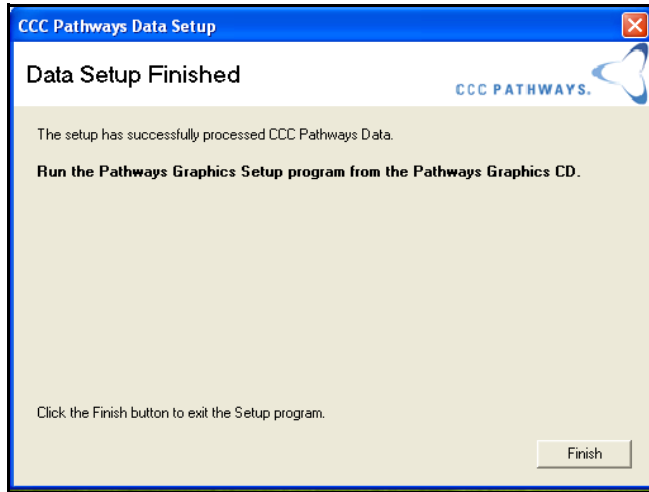
Make a note of the amount of disk space, then click Exit. Free up some hard drive space on the drive on which you want to install, then restart the installation.

- 21 The Process Status screen appears. A series of progress bars keep you informed of the installation progress.



Process Status screen

- 22 When the setup is complete, the Data Setup Finished screen appears. Click Finish to exit. You do not need to reboot your computer.

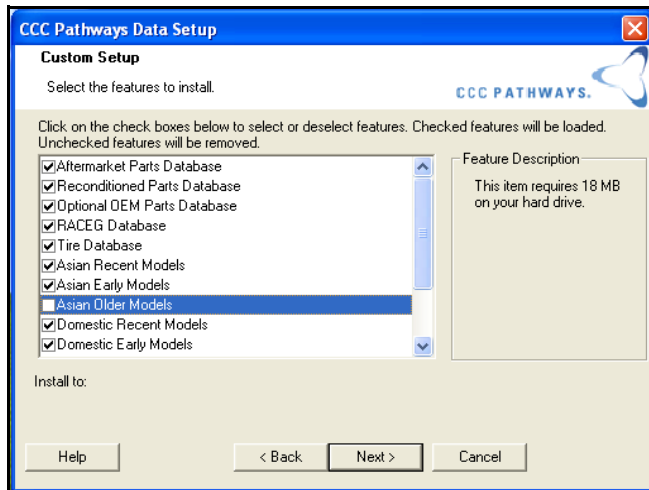


Data Setup Finished screen

The Custom Installation

The Custom Installation lets you select which databases you want to install. It is recommended for advanced users.

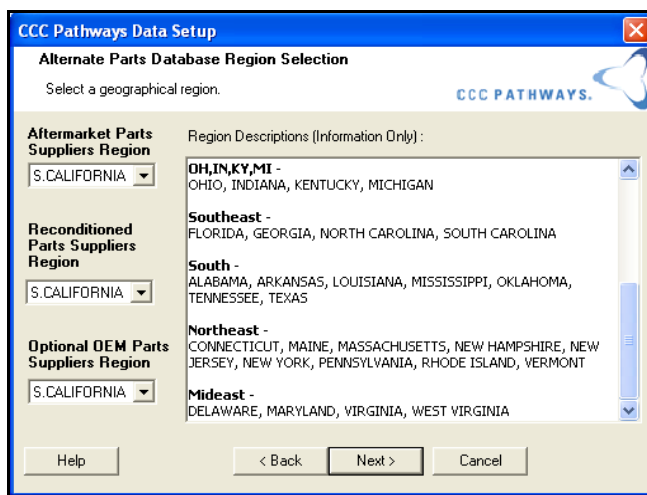
- 1 Select Custom on the Setup Type screen, and click Next.
- 2 The Custom Setup screen displays. Use this screen to select the databases you want installed. Only databases that you have purchased will be displayed.



Custom Setup screen

- 3 Each database has a checkbox. You can de-select a database by clicking in the checkbox; you can re-select a database by clicking in an empty checkbox. Some features are required for CCC Pathways to function properly. Required features cannot be de-selected (e.g., Standard Database).
- 4 Read the Description information for each selection you make. It will tell you about the database and list the hard drive space required.
- 5 When you are satisfied with your database selections, click the Next button.

If you have purchased the Aftermarket Parts Suppliers database, the Reconditioned Parts Suppliers database, and/or the Optional OEM parts database then the program will display the Alternate Parts Database Region Selection screen.

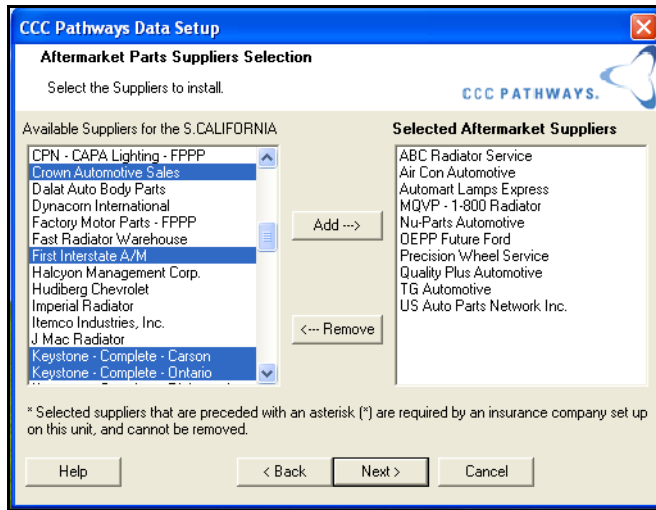


Alternate Parts Database Region Selection

Note If you have not purchased either the Aftermarket database, the Reconditioned database, or the Optional OEM database, when you elect to do a Complete installation you will see the Ready to Install/Update CCC Pathways Data screen.

- 1 Select a region from the Aftermarket Parts Suppliers Region droplist. (This droplist will only be visible if you purchased the database.)
- 2 Select a region from the Reconditioned Parts Suppliers Region droplist. (This droplist will only be visible if you purchased the database.)
- 3 Select a region from the Optional OEM Parts Suppliers Region droplist. (This droplist will only be visible if you purchased the database.)
- 4 Read the text in the Alternate Parts Database Region Selection descriptions. Verify that your state appears in the Region. Then click Next.

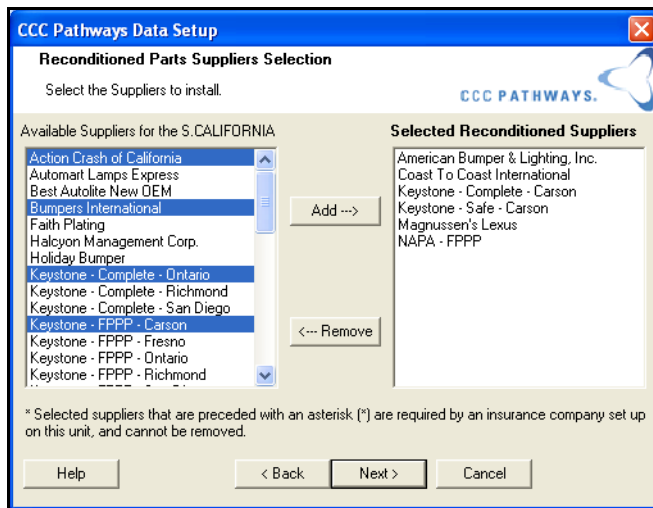
If you have purchased the Aftermarket Parts database, the program will display the Aftermarket Parts Suppliers Selection screen.



Aftermarket Parts Suppliers Selection screen

- 5 Highlight a supplier from the Available Suppliers for the Region list (The name of the region is determined on the Alternate Parts Database Region Selection screen.). You can highlight multiple suppliers by holding down your Ctrl key and clicking on each supplier.
- 6 Click the Add button to move your selection(s) into the Selected Aftermarket Suppliers list.
- 7 Repeat the process for any additional suppliers you want to select.
- 8 If you select a supplier by mistake, highlight the supplier in the Selected Aftermarket Suppliers list, and click the Remove button to de-select the supplier.
- 9 When you see all your selected suppliers in the Selected Aftermarket Suppliers list, click Next.

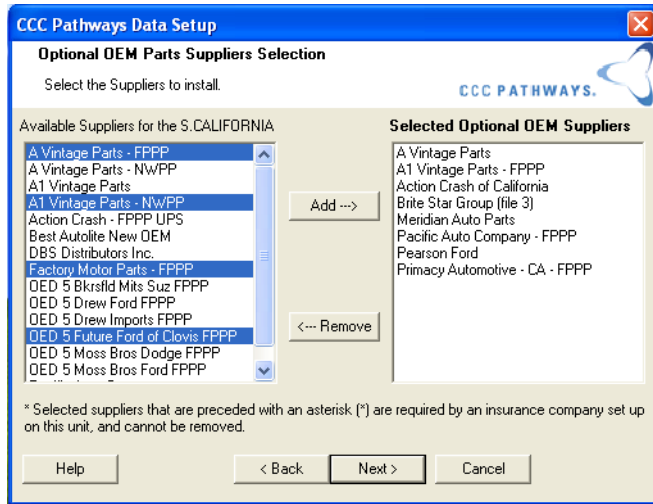
If you have purchased the Reconditioned Parts database, the program will display the Reconditioned Parts Suppliers Selection screen.



Reconditioned Parts Suppliers Selection

- 10 Highlight a supplier from the Available Suppliers for the Region list (The name of the region is determined on the Alternate Parts Database Region Selection screen.). You can highlight multiple suppliers by holding down your Ctrl key and clicking on each supplier.
- 11 Click the Add button to move your selection(s) into the Selected Reconditioned Suppliers list.
- 12 Repeat the process for any additional suppliers you want to select.
- 13 If you select a supplier by mistake, highlight the supplier in the Selected Reconditioned Suppliers list, and click the Remove button to de-select the supplier.
- 14 When you see all your selected suppliers in the Selected Reconditioned Suppliers list, click Next.

If you have purchased the Optional OEM database, the program will display the Optional OEM Parts Suppliers Selection screen.



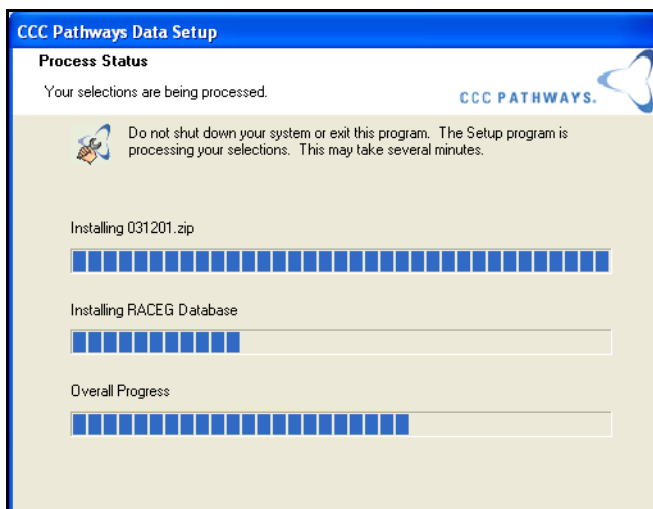
Optional OEM Parts Suppliers Selection screen

- 15 Highlight a supplier from the Available Suppliers for the Region list (The name of the region is determined on the Alternate Parts Database Region Selection screen.). You can highlight multiple suppliers by holding down your Ctrl key and clicking on each supplier.
- 16 Click the Add button to move your selection(s) into the Selected Optional OEM Suppliers list.
- 17 Repeat the process for any additional suppliers you want to select.
- 18 If you select a supplier by mistake, highlight the supplier in the Selected Optional OEM Suppliers list, and click the Remove button to de-select the supplier.
- 19 When you see all your selected suppliers in the Selected Optional OEM Suppliers list, click Next.
- 20 The Ready to Install/Update CCC Pathways Data screen appears. Click Continue.

Important! If you do not have enough disk space to complete the installation, you will see the Data Setup Failed screen. The message will notify you of the amount of disk space required.

Make a note of the amount of disk space, then click Exit. Free up some hard drive space on the drive on which you want to install, then restart the installation.

- 21 The Process Status screen appears. A series of progress bars keep you informed of the installation progress.



Process Status screen

- 22 When the setup is complete, the Data Setup Finished screen appears. Click Finish to exit. You do not need to reboot your computer.

Installing the CCC Pathways Graphics Disc

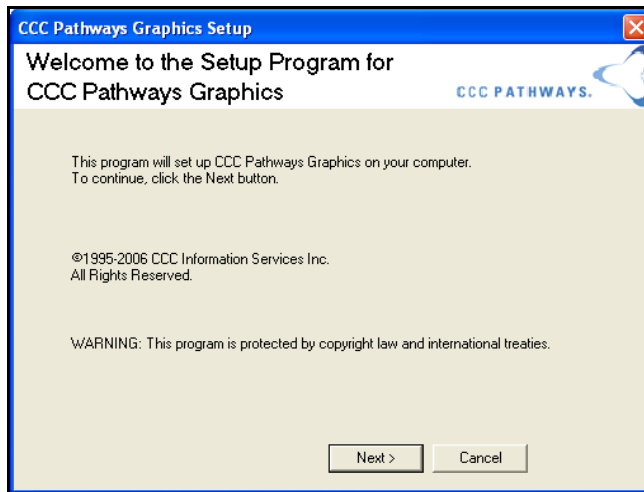
Follow these procedures to install the CCC Pathways graphics on your hard drive. The CCC Pathways Graphics Disc installs the MOTOR graphics for CCC Pathways. You will receive a new CCC Pathways Graphics Disc each month, as part of the CCC Pathways Monthly Update program.

Note If you choose to access graphics directly from the CCC Pathways Graphics Disc, keep the CCC Pathways Graphics Disc in your CD-ROM drive when you work with CCC Pathways. (The program automatically looks for graphics on the CD-ROM drive of stand-alone systems which do not have graphics loaded on the hard drive.)

Important! You must complete the installation of both the Program Disc and Data Disc prior to installing the Graphics Disc.

To install CCC Pathways Graphics

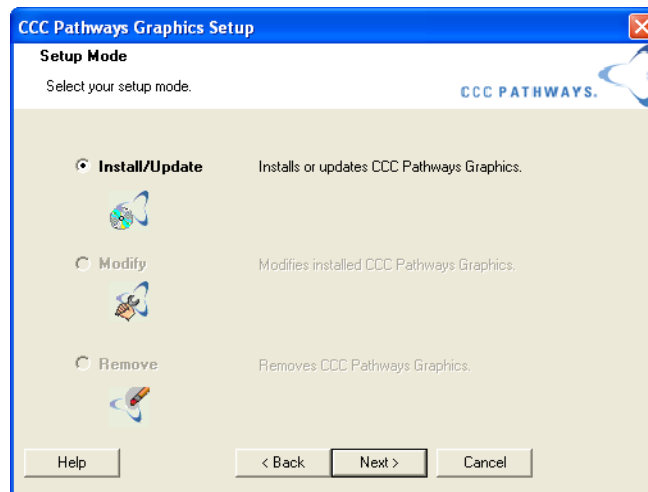
- 1 Insert the CD labeled CCC Pathways Graphics Disc into your CD-ROM drive.
- 2 Open the Start menu, and select the Run option.
- 3 In the Open field type **d:\setup.exe** and press Enter. (If your CD-ROM drive is assigned a letter other than d, replace d with the appropriate letter.)
- 4 The program checks to make sure you have already run the CCC Pathways Program Disc. If you have not, you will see an error message, you will be prevented from continuing with the installation of the Graphics Disc.
- 5 The program checks to make sure that you have already run the CCC Pathways Data Disc. If you have not, you will see an error message, you will be prevented from continuing with the installation of the Graphics Disc.
- 6 The program checks to make sure that CCC Pathways is not running. If the program is running, you will get an error message that automatically ends the setup program when you click OK. Close CCC Pathways, and restart the Pathways Graphics Disc installation.
- 7 The program displays the Welcome to the Setup Program for CCC Pathways Graphics screen. Read the screen, and when you are ready to continue with the installation, select the Next button.



Welcome to the Setup Program for CCC Pathways Graphics screen

Setup Mode

The Setup Mode screen displays with Install/Update pre-selected. Click Next.



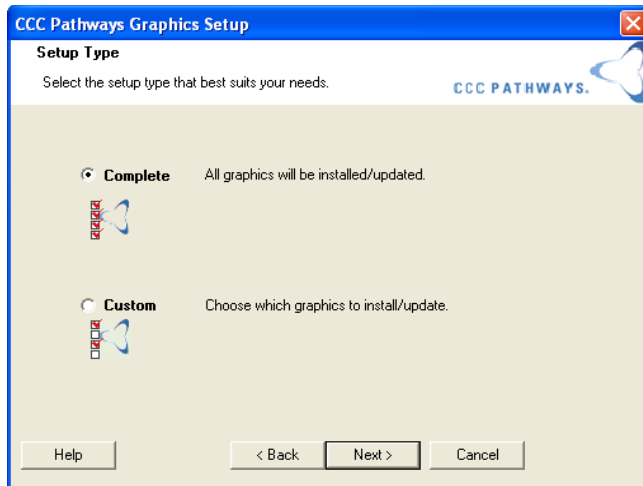
Setup Mode - Install/Update

Setup Type

At this point in the installation process, the Setup Type screen appears, and you'll be asked whether you want a Complete or a Custom installation. Choose the setup type that best suits your needs.

- **Complete** - This type of installation will install all graphics.

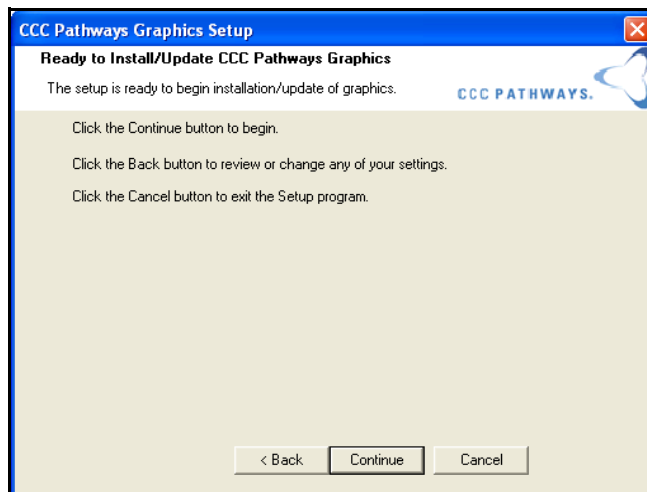
- Custom** - This type of installation lets you choose which graphics you want to install.



Setup Type - Complete

The Complete Installation

- 1 Select Complete on the Setup Type screen, and click Next. All graphics libraries will be installed.
- 2 The Ready to Install/Update CCC Pathways Graphics screen appears. Click Continue.

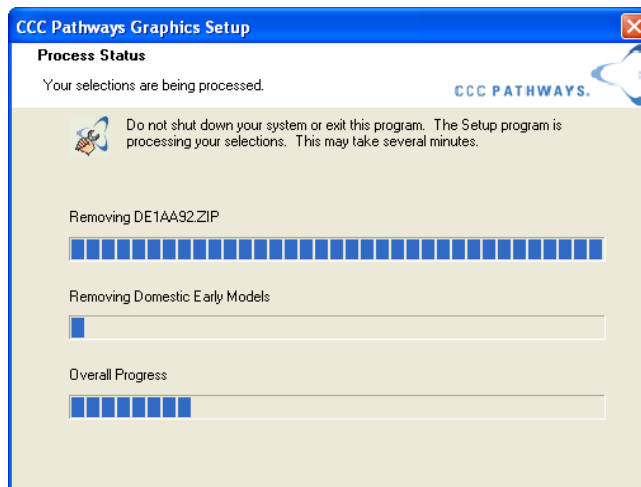


Ready to Install/Update CCC Pathways Graphics screen

Important! If you do not have enough disk space to complete the installation, you will see the Graphics Setup Failed screen. The message will notify you of the amount of disk space required.

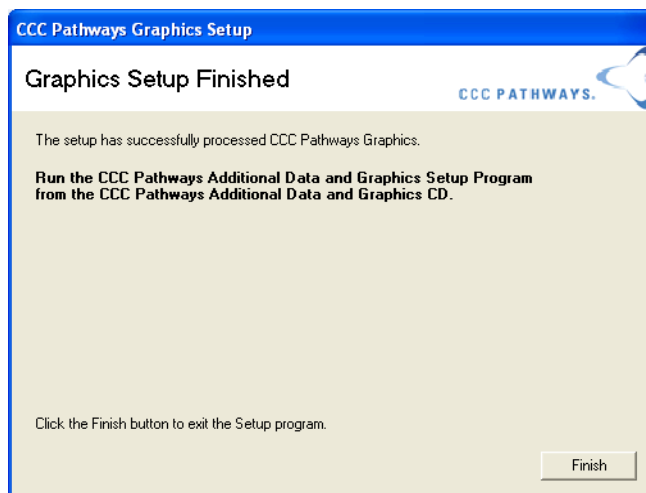
Make a note of the amount of disk space, then click Exit. Free up some hard drive space on the drive on which you want to install, then restart the installation.

- 3 The Process Status screen appears. A series of progress bars keep you informed of the installation progress.



Process Status screen

- 4 When the setup is complete, the Graphics Setup Finished screen appears. Click Finish to exit. You do not need to reboot your computer.

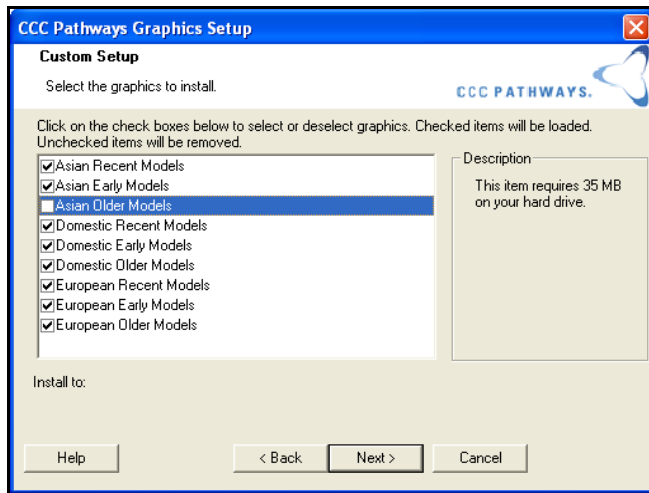


Graphics Setup Finished screen

The Custom Installation

The Custom Installation lets you select which graphic databases you want to install.

- 1 Select Custom on the Setup Type screen, and click Next.
- 2 The Custom Setup screen displays. Use this screen to select the graphic databases you want installed.
- 3 Each database has a checkbox. You can de-select a database by clicking in the checkbox; you can re-select a database by clicking in an empty checkbox.
- 4 Read the Description information for each selection you make. It will tell you about the database and list the hard drive space required.



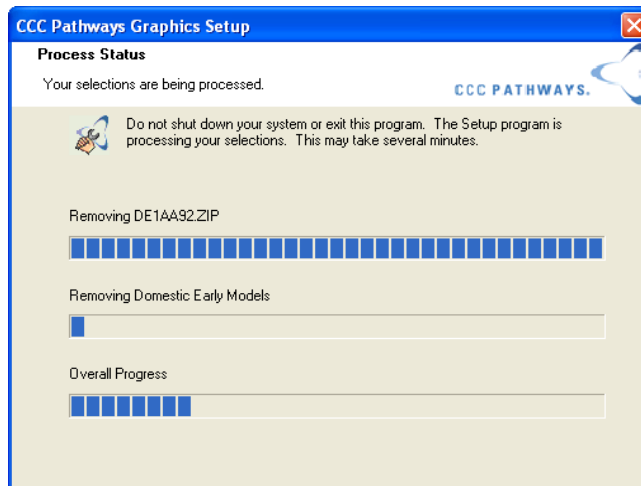
Custom Setup screen

- 5 When you are satisfied with your database selections, click the Next button.
- 6 The Ready to Install/Update CCC Pathways Data screen appears. Click Continue.

Important! If you do not have enough disk space to complete the installation, you will see the Data Setup Failed screen. The message will notify you of the amount of disk space required.

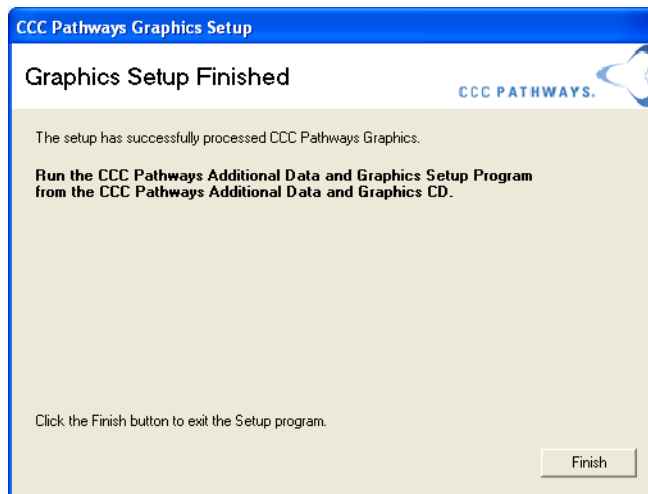
Make a note of the amount of disk space, then click Exit. Free up some hard drive space on the drive on which you want to install, then restart the installation.

- 7 The Installing Pathways Graphics screen appears. A progress bar keeps you informed of the installation progress.



Process Status screen

- 8 When the setup is complete, the Graphics Setup Finished screen appears. Click Finish to exit. You do not need to reboot your computer.



Graphics Setup Finished screen

Installing the CCC Pathways Additional Data and Graphics Disc

Follow these procedures to install the CCC Pathways Additional Data and Graphics on your hard drive. The Additional Data and Graphics Disc contains Chief Vehicle Specifications, an optional feature.

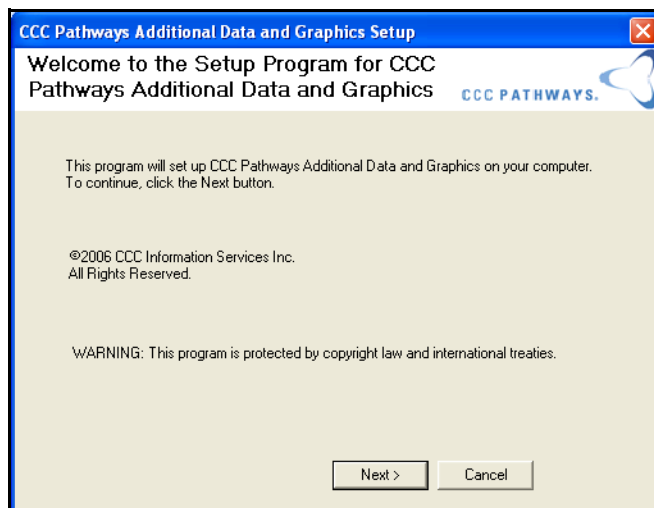
Important! If you have not purchased one or both of these options, you will not be able to install the Additional Data and Graphics Disc.

You must complete the installation of both the Program Disc and the Data Disc prior to installing the Additional Data and Graphics Disc. CCC strongly recommends that you also complete the installation of the Graphics Disc (unless you plan to run graphics directly from the CD).

You will receive a new Additional Data and Graphics Disc each month, as part of the CCC Pathways Monthly Update program.

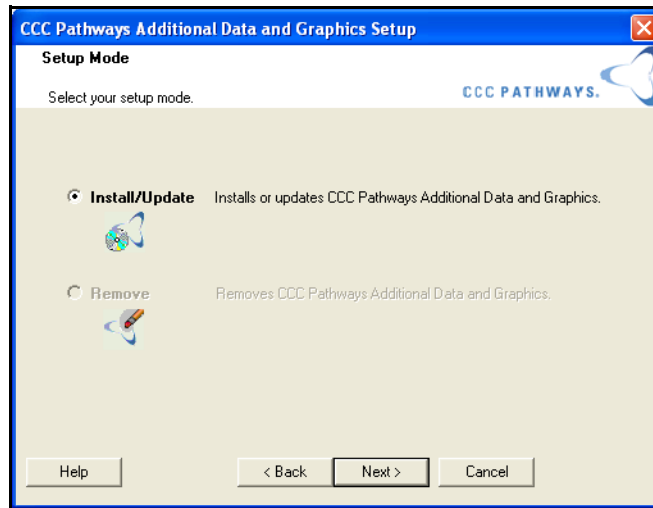
To install the Additional Data and Graphics Disc

- 1 Insert the CD labeled CCC Pathways Additional Data and Graphics Disc into your CD-ROM drive.
- 2 Open the Start menu, and select the Run option.
- 3 In the Open field type **d:\setup.exe** and press Enter. (If your CD-ROM drive is assigned a letter other than d, replace d with the appropriate letter.)
- 4 The program checks to make sure you have purchased Chief Frame Specifications. If you have not, you will see an error message, you will be prevented from continuing with the installation of the Additional Data and Graphics Disc.



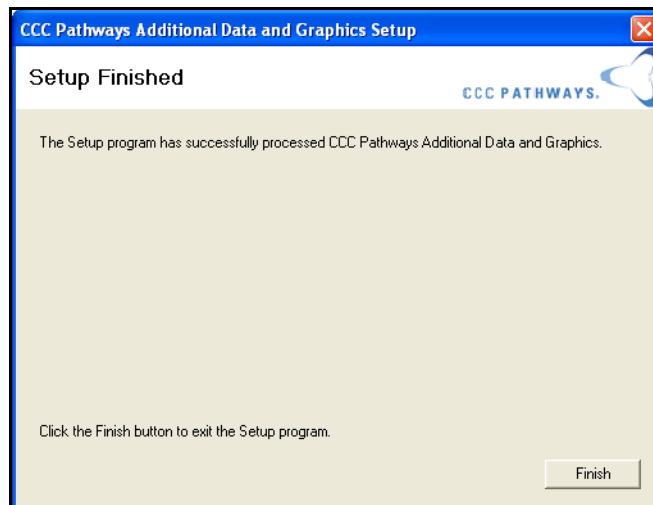
The Additional Data and Graphics Welcome screen

- 5 The program displays the Welcome screen for CCC Pathways Additional Data and Graphics. Click Next.



Setup Mode - Install/Update is pre-selected

- 6 The Setup Mode screen displays with Install/Update pre-selected. Click Next.
- 7 Setup installs the data. When the installation is complete, the Setup Finished screen displays.



Setup Finished

- 8 Click Finish.

Updating CCC Pathways on a Network

Follow these procedures to update your program, database, and graphics files.

The CCC Pathways program is delivered on multiple compact discs (CDs): CCC Pathways Program Disc, CCC Pathways Data Disc, and CCC Pathways Graphics Disc. If you have purchased Chief Vehicle Specifications, you will receive the Additional Data and Graphics Disc.

The CCC Pathways Resource Kit, is also included in your original package.

Note To complete your monthly update during a month when you do not receive a Program Disc, you will only need to run the Data Disc, the Graphics Disc, and (if you receive it) the Additional Data and Graphics Disc.

Because you may need to use your CCC Pathways Program Discs between updates, (e.g., you'll use the CCC Pathways Program Disc to run a profile change), be sure to keep them all in a safe place!

You will also use your CCC Pathways Program Disc to run a profile change. For information on running a profile change, see the "Profile Change and Pathways Update" section of this chapter.

Updating the CCC Pathways Program Disc

As you run this update, the program will guide you along, asking you questions, telling you the next step, and offering help. Read all instructions carefully as the update progresses.

Read all installation screens!

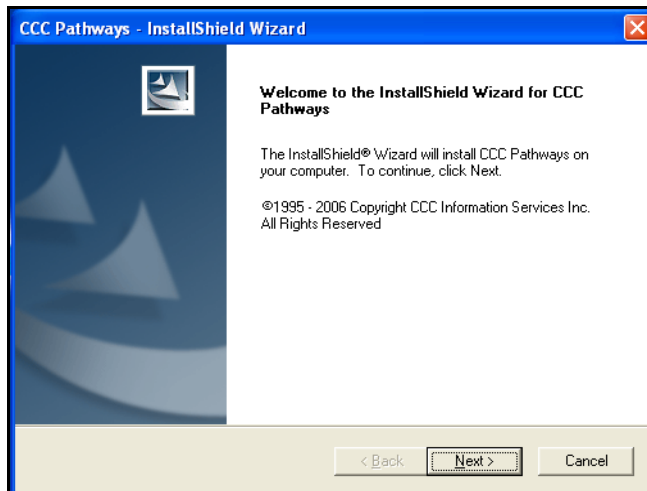
Important! The CCC Pathways Program Update must be performed at the same workstation that originally installed Pathways.

To update the CCC Pathways Program

- 1 If you have CCC Pathways Estimating Solution running, close it now.
- 2 Insert the CD labeled CCC Pathways Program into your CD-ROM drive. You will have received this CD as part of your CCC Pathways monthly update.
- 3 Open the Start menu, and select the Run option.
- 4 In the Open field type **d:\setup.exe** and press Enter. (If your CD-ROM drive is assigned a letter other than d, replace d with the appropriate letter.) The program will display the message, "Preparing to Install."

Important! If your operating system (e.g., Windows XP) requires you to have Administrator rights to install this program, and you do not, you will not be able to proceed. Contact your Network Administrator.

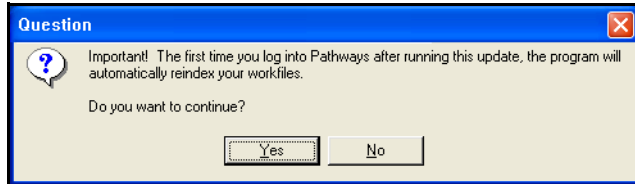
- 5 The program checks your operating system. If you are attempting to update on an unapproved operating system (e.g., Windows 95), the update will stop.
- 6 The program checks your display. If your display is set to less than 800 x 600 pixels, or if your colors are set to less than 256, the update will stop. You will be asked to reset your display and/or your colors before you can begin the update again.
- 7 The program displays the Welcome to the InstallShield Wizard for Pathways screen. Read the screen. When you are ready to continue with the update, select the Next button.



Welcome screen

- 8 After you select the Next button from the Welcome screen, the program scans your computer to see if you already have CCC Pathways loaded on your system and to make sure that the program is not running.
- 9 If the monthly update is also a version upgrade, you will see a dialog box informing you that the program will reindex when you logon the first time after running the update.

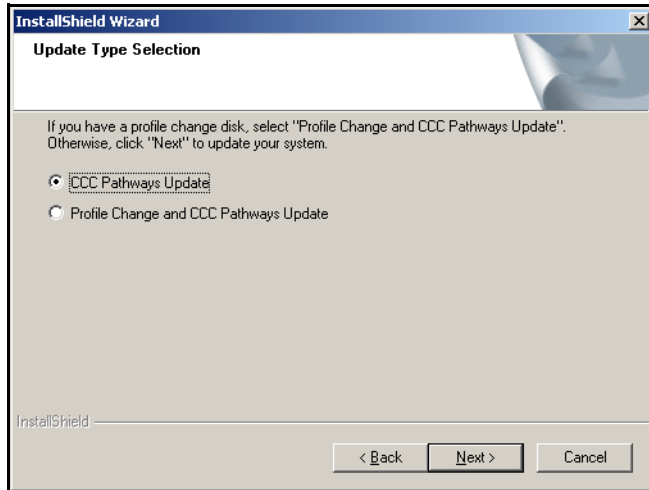
Note If you have a large number of workfiles in your In Process section, reindexing can take a significant amount of time. If the reindexing process gets interrupted, the next time you launch CCC Pathways, the program will restart the indexing process at the point where it stopped.



Reindex Question

Click Yes if you want to continue with the update. Click no to terminate the update so that you can run the update at a more convenient time.

- 10 The Program update screen appears where you can specify whether this is a standard program update or a Profile Change and Pathways Update.



Update Type Selection screen

Standard Program Update

If there are no changes to the databases or program features to which you subscribe, select Pathways Update. This will run the standard program update.

To run a standard program update

- 1 On the Update Type Selection screen, select Pathways Update.
- 2 Click Next.

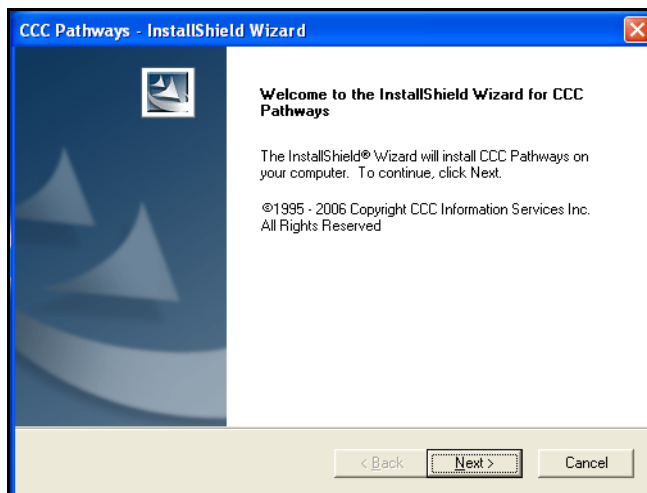
Profile Change and Pathways Update

In order to be able to use databases and program features to which you previously did not have access, or to delete features you no longer want, you need to run the Profile Change and Pathways Update.

You will need to have a profile change Diskette in order to run a profile change.

To run a profile change and Pathways update

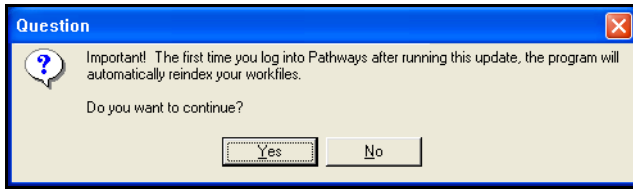
- 1 On the Update Type Selection screen, select Profile Change and Pathways Update.
- 2 Click Next. The Setup Information Location dialog box appears. If you haven't already inserted your profile change Diskette in your floppy drive, do it now.



Welcome screen

- 3 After you select the Next button from the Welcome screen, the program scans your computer to see if you already have CCC Pathways loaded on your system and to make sure that the program is not running.
- 4 If the monthly update is also a version upgrade, you will see a dialog box informing you that the program will reindex when you logon the first time after running the update.

Note If you have a large number of workfiles in your In Process section, reindexing can take a significant amount of time. If the reindexing process gets interrupted, the next time you launch CCC Pathways, the program will restart the indexing process at the point where it stopped.



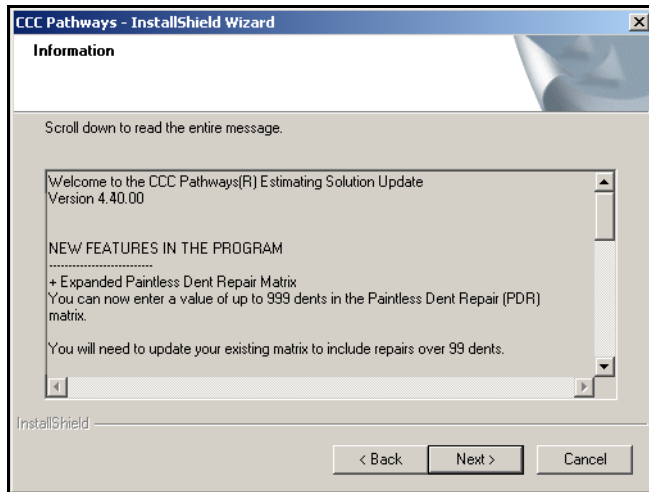
Reindex Question

- 5 Click Yes if you want to continue with the update. Click no to terminate the update so that you can run the update at a more convenient time.

Information Screen

The program displays the Information screen, containing the Readme file.

The Readme file contains important information about new program features. We suggest you read this file now.



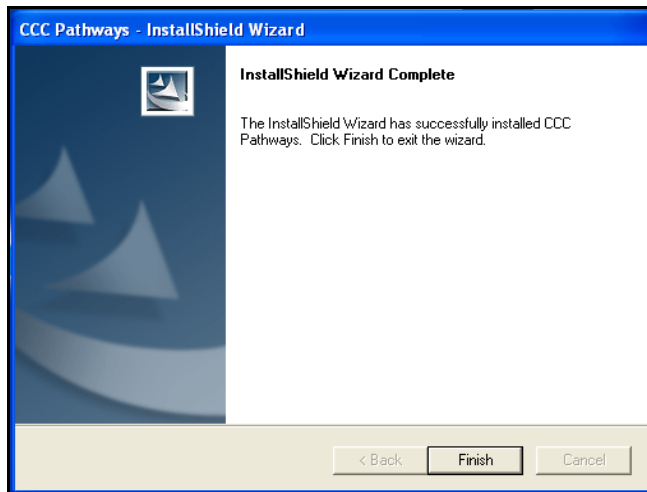
Information screen

When you are finished reading, click Next.

- 6 The program starts copying the files to your hard drive. The Setup Status screen keeps you informed as to the progress of the installation.
- 7 When the installation is finished, you will see the InstallShield Wizard Complete screen.

InstallShield Wizard Complete

Depending on your system requirements, the program may or may not need you to reboot your computer at this point. Before you continue with the update, you'll need to remove any disks from their drives.



Install Wizard Complete

If you must reboot, you will see the InstallShield Wizard Complete dialog box with two buttons.

- **Yes, I want to restart my computer now**—This choice is automatically selected and will restart your computer immediately. Click on Finish.
- **No, I will restart my computer later**—This choice allows you to reboot at a more convenient time. Select it, then click on Finish.

Note If the program has indicated that you need to reboot, then you must reboot before starting CCC Pathways Estimating Solution or before updating the CCC Pathways Database. The program will not remind you to reboot if you have chosen to reboot later.

If the program does *not* need to reboot, you will see the Installshield Wizard Complete dialog box without the reboot options. Select Finish.

Updating Your Workstations - Client Setup

Important! All workstations must be mapped to the shared folder on the server with the same drive letter. This is the same drive letter you chose when installing CCC Pathways to the server (e.g., P:\).

After you have updated the CCC Pathways Program Disc on the server, follow these steps to install the necessary files to the hard drive of each of the workstations attached to the network.

Note You must perform this procedure at each workstation where you will be running CCC Pathways before you install either the Data Disc, the Graphics Disc, or the Additional Data and Graphics Disc.

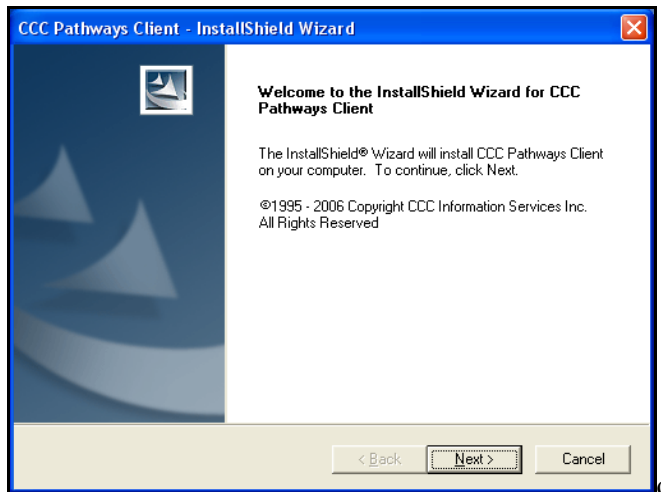
To update your workstation-client setup

At the workstation, make sure the Windows desktop is displayed.

- 1 Open the Start menu. Select the Run option. In the Open field type the following command: **P:\pathways\clsetup\setup.exe** (If you have mapped to a letter other than P, substitute that letter.) The program will display the message “Preparing to Install.”

Important! If your operating system (e.g., Windows XP) requires you to have Administrator rights to install this program, and you do not, you will not be able to proceed. Contact your Network Administrator.

- 2 The program checks your operating system. If you are attempting to install on an unapproved operating system (e.g., Windows 95), installation will stop.
- 3 The program checks your display. If your display is set to less than 800 x 600 pixels, or if your colors are set to less than 256, installation will stop. You will be asked to reset your display and/or your colors before you can begin the installation again.
- 4 The program displays the Welcome to InstallShield Wizard for Pathways Client screen. Read the screen. When you are ready to continue with the installation, select the Next button.



Client Setup Welcome screen

- 5 After you select the Next button from the Welcome screen, Setup checks your computer to see if you already have CCC Pathways loaded on your server. If Setup does not find Pathways on your server, you will see an error message and Client Setup installation will end. Click Next.
- 6 The program starts copying the files to your specified drive. The Setup Status screen keeps you informed as to the progress of the installation.
- 7 When the installation is finished, you will see the InstallShield Wizard Complete screen. Depending on your requirements, Setup may or may not need you to reboot your computer at this point.
- 8 Before you continue with the installation, you'll need to remove any disks from their drives.

Updating the CCC Pathways Data Disc

The CCC Pathways Data Disc installs all of the database information you need to create estimates and supplements using CCC Pathways. Depending on how your system is set up, these databases may include MOTOR, Aftermarket, Reconditioned, Tire, and RACEG.

During the Database update, the state, a region, and vendors for Aftermarket parts and Reconditioned parts that you specified during installation or during your last update or reload will be automatically selected.

You will receive a new CCC Pathways Data Disc each month, as part of the CCC Pathways Monthly Update program.

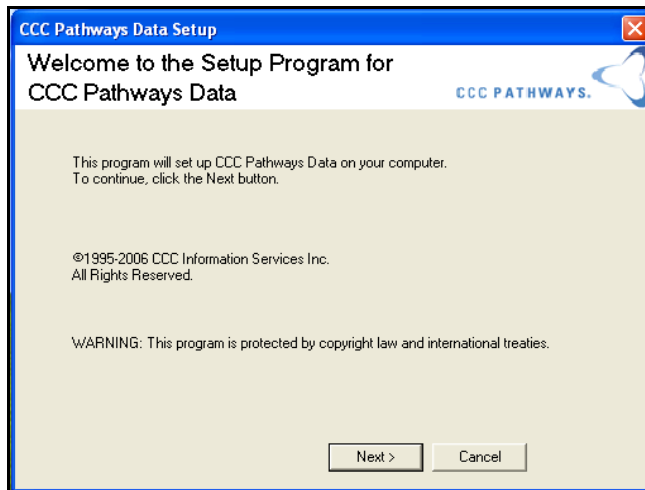
Note The date of the Data Disc will be printed on the estimate, so that anyone reading the estimate can determine which monthly data was used.

To update the CCC Pathways Database

- 1 Insert the CD labeled CCC Pathways Data Disc into your CD-ROM drive.
- 2 Open the Start menu, and select the Run option.
- 3 In the Open field type **d:\setup.exe** and press Enter. (If your CD-ROM drive is assigned a letter other than d, replace d with the appropriate letter.)
- 4 The Setup program checks to make sure you have a compatible version of CCC Pathways Program Disc installed (i.e., if you received a Program Disc with your monthly update, you must run it before you update your database).

If you do not have a compatible version of the CCC Pathways installed, you will see an error message, you will be prevented from continuing with the installation of the Database.

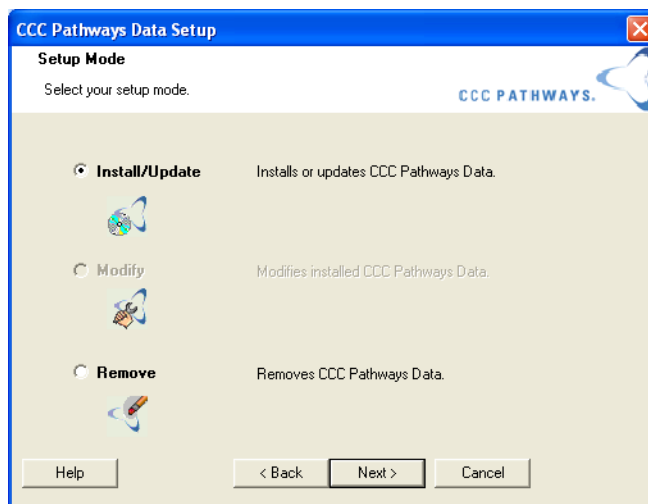
- 5 The program checks to make sure that CCC Pathways is not running. If the program is running, you will get an error message that automatically ends the setup program when you click OK. Close CCC Pathways, and restart the CCC Pathways Data installation.
- 6 The program displays the Welcome to Setup Program for CCC Pathways Data screen. Read the screen, and when you are ready to continue with the installation, select the Next button.



Welcome to Setup Program for CCC Pathways Data screen

Setup Mode

The Setup Mode screen displays with Install/Update pre-selected. Click Next.



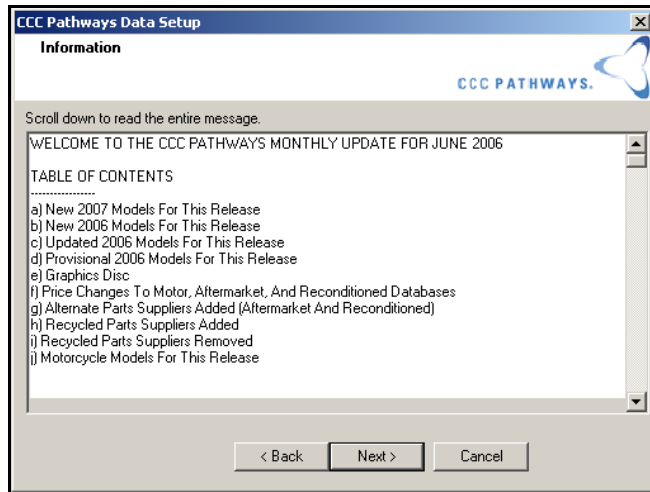
Setup Mode - Install/Update

Note You can also choose Modify or Remove. Modify will modify installed CCC Pathways data. Remove will remove CCC Pathways data.

Information Screen

The program displays the Information screen, containing the Readme file. The Readme file contains important information:

- updated list of vehicle models in the release
- alternate parts suppliers added (both aftermarket and reconditioned)
- recycled parts suppliers added and deleted,
- newly added or updated Motorcycle models
- Chief Frame Specification information

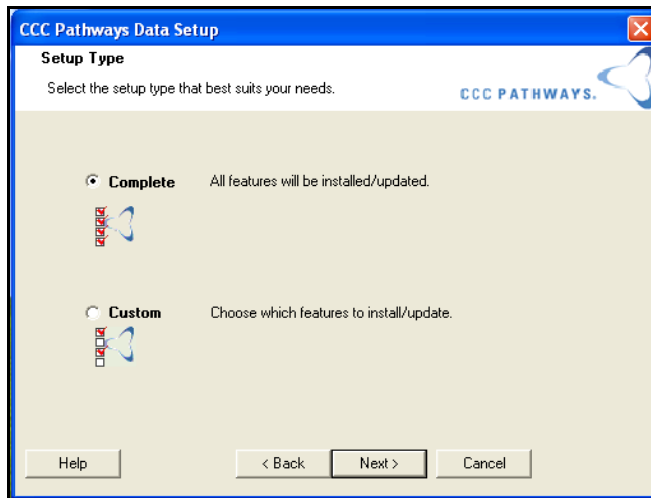


Information screen

We suggest you read this now. When you are finished reading, click Next.

Setup Type

At this point in the update process, the Setup Type screen appears, and you'll be asked whether you want a Complete or a Custom installation. Choose the setup type that best suits your needs, and click Next.

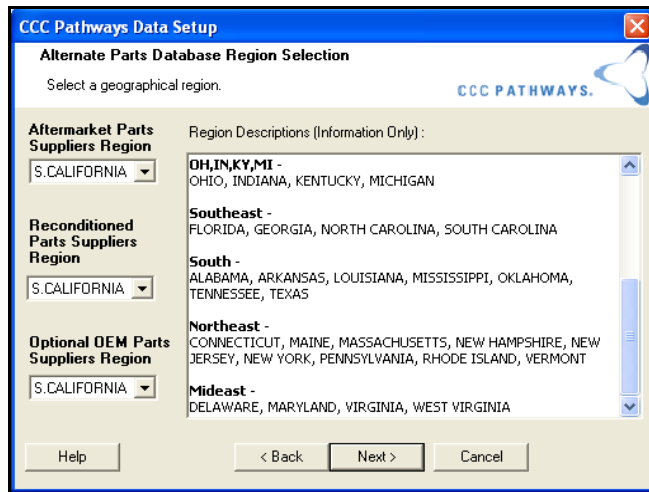


Setup Type - Complete

- **Complete** - This type of installation will install the complete versions of all databases to which you have subscribed. Even if you did a Custom update the previous month, choosing to do a Complete update will install all databases.
- **Custom** - This type of installation lets you choose which databases you want to install (from those to which you have subscribed). Any databases that you de-select during a Custom Update will be deleted from your system.

The Complete Update

If you have purchased the Aftermarket Parts Suppliers database, the Reconditioned Parts Suppliers database, and/or the Optional OEM parts database then the program will display the Alternate Parts Database Region Selection screen.

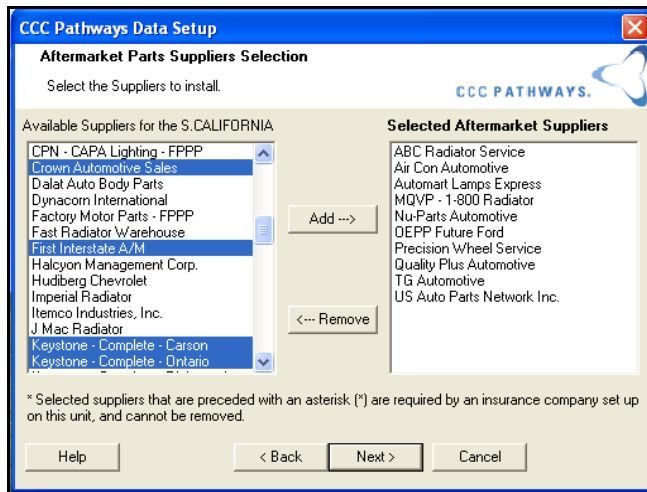


Alternate Parts Database Region Selection

Note If you have not purchased either the Aftermarket database, the Reconditioned database, or the Optional OEM database, when you elect to do a Complete installation you will see the Ready to Install/Update CCC Pathways Data screen.

- 1 Select a region from the Aftermarket Parts Suppliers Region droplist. (This droplist will only be visible if you purchased the database.)
- 2 Select a region from the Reconditioned Parts Suppliers Region droplist. (This droplist will only be visible if you purchased the database.)
- 3 Select a region from the Optional OEM Parts Suppliers Region droplist. (This droplist will only be visible if you purchased the database.)
- 4 Read the text in the Alternate Parts Database Region Selection descriptions. Verify that your state appears in the Region. Then click Next.

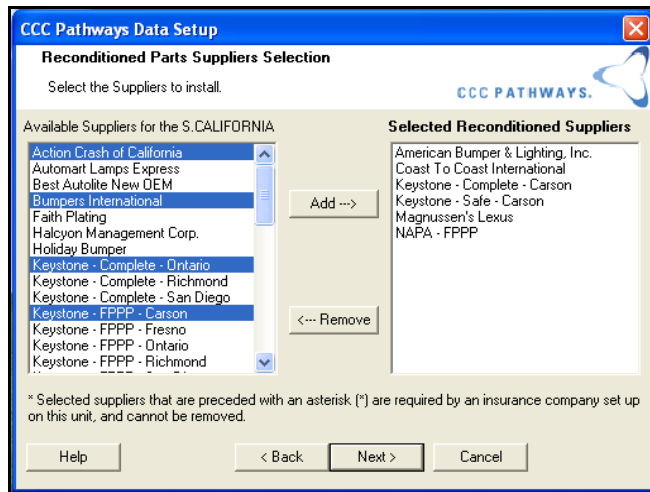
If you have purchased the Aftermarket Parts database, the program will display the Aftermarket Parts Suppliers Selection screen.



Aftermarket Parts Suppliers Selection screen

- 5 Highlight a supplier from the Available Suppliers for the Region list (The name of the region is determined on the Alternate Parts Database Region Selection screen.). You can highlight multiple suppliers by holding down your Ctrl key and clicking on each supplier.
- 6 Click the Add button to move your selection(s) into the Selected Aftermarket Suppliers list.
- 7 Repeat the process for any additional suppliers you want to select.
- 8 If you select a supplier by mistake, highlight the supplier in the Selected Aftermarket Suppliers list, and click the Remove button to de-select the supplier.
- 9 When you see all your selected suppliers in the Selected Aftermarket Suppliers list, click Next.

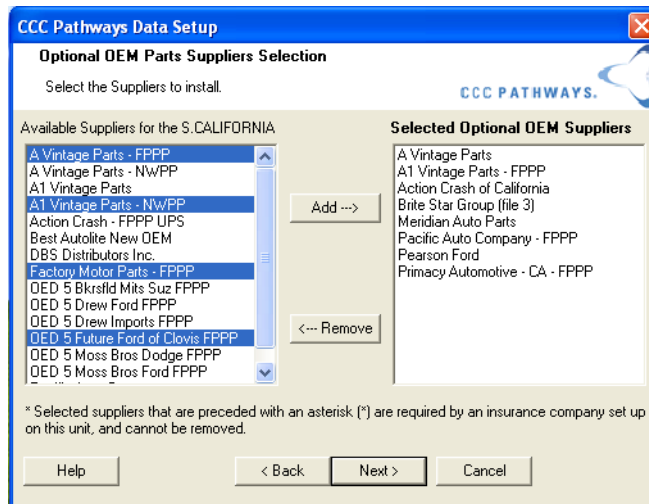
If you have purchased the Reconditioned Parts database, the program will display the Reconditioned Parts Suppliers Selection screen.



Reconditioned Parts Suppliers Selection

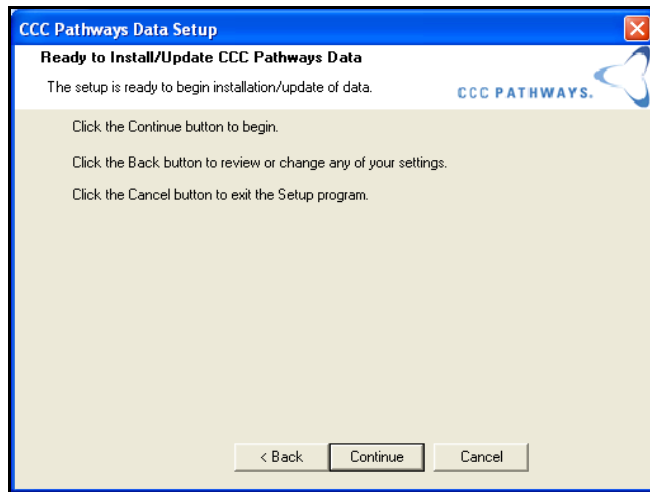
- 10 Highlight a supplier from the Available Suppliers for the Region list (The name of the region is determined on the Alternate Parts Database Region Selection screen.). You can highlight multiple suppliers by holding down your Ctrl key and clicking on each supplier.
- 11 Click the Add button to move your selection(s) into the Selected Reconditioned Suppliers list.
- 12 Repeat the process for any additional suppliers you want to select.
- 13 If you select a supplier by mistake, highlight the supplier in the Selected Reconditioned Suppliers list, and click the Remove button to de-select the supplier.
- 14 When you see all your selected suppliers in the Selected Reconditioned Suppliers list, click Next.

If you have purchased the Optional OEM database, the program will display the Optional OEM Parts Suppliers Selection screen.



Optional OEM Parts Suppliers Selection screen

- 15 Highlight a supplier from the Available Suppliers for the Region list (The name of the region is determined on the Alternate Parts Database Region Selection screen.). You can highlight multiple suppliers by holding down your Ctrl key and clicking on each supplier.
- 16 Click the Add button to move your selection(s) into the Selected Optional OEM Suppliers list.
- 17 Repeat the process for any additional suppliers you want to select.
- 18 If you select a supplier by mistake, highlight the supplier in the Selected Optional OEM Suppliers list, and click the Remove button to de-select the supplier.
- 19 When you see all your selected suppliers in the Selected Optional OEM Suppliers list, click Next.
- 20 The Ready to Install/Update CCC Pathways Data screen appears. Click Continue.

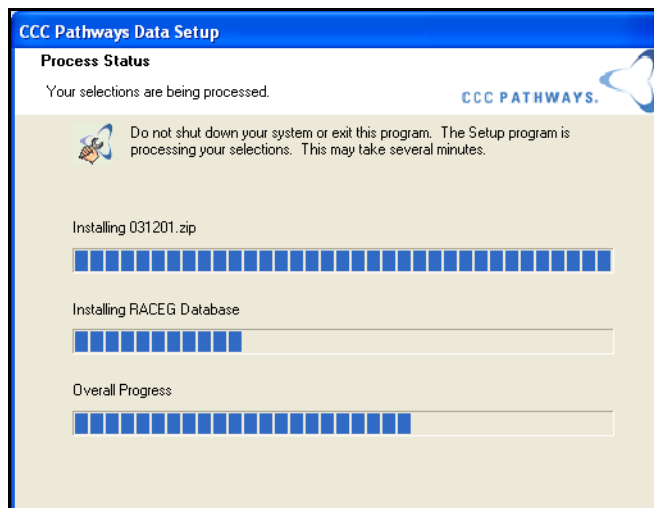


Ready to Install/Update CCC Pathways Data screen

Important! If you do not have enough disk space to complete the Update, you will see the Data Setup Failed screen. The message will notify you of the amount of disk space required.

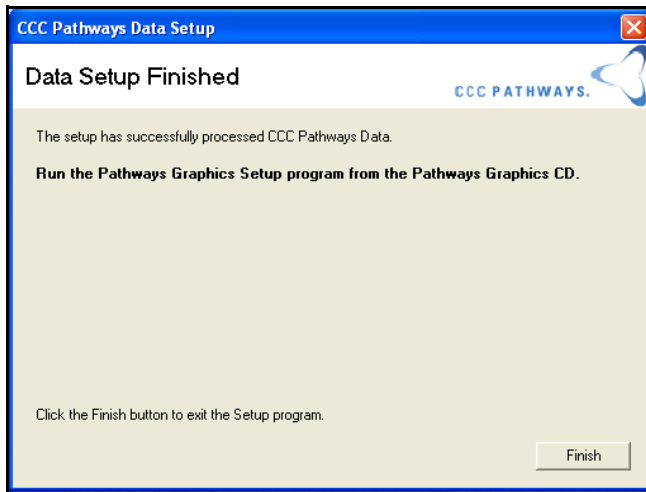
Make a note of the amount of disk space, then click Exit. Free up some hard drive space on the drive on which you want to install, then restart the update.

- 21 The Process Status screen appears. A series of progress bars keep you informed of the update progress.



Process Status screen

- 22 When the setup is complete, the Data Setup Finished screen appears. Click Finish to exit. You do not need to reboot your computer.

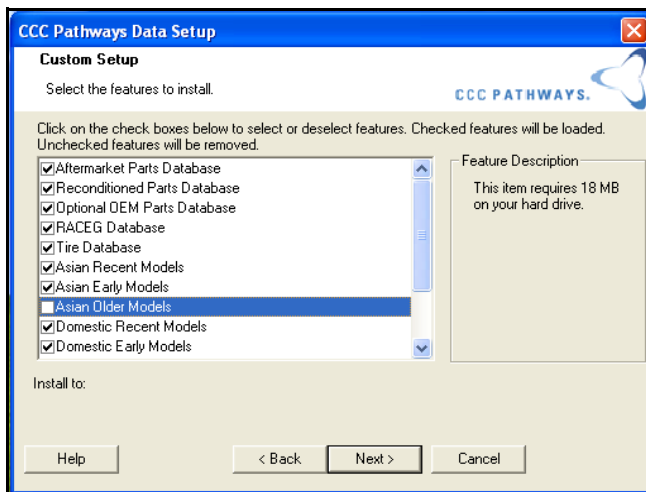


Data Setup Finished screen

The Custom Update

The Custom Update lets you select which databases you want to install. It is recommended for advanced users.

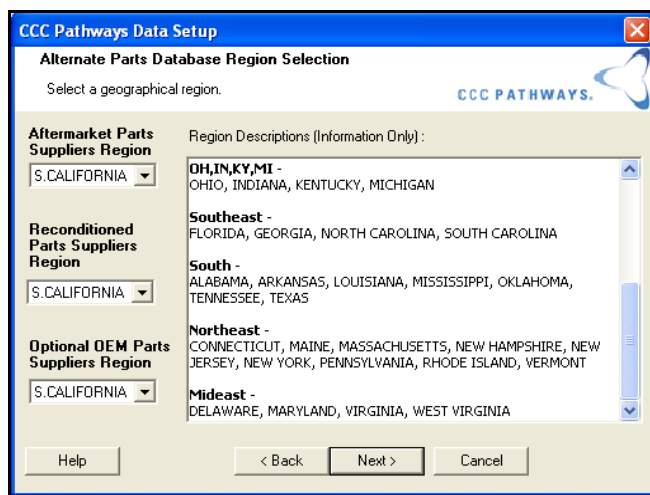
- 1 Select Custom on the Setup Type screen, and click Next.
- 2 The Custom Setup screen displays. Use this screen to select the databases you want installed. Only databases that you have purchased will be displayed.



Custom Setup screen

- 3 Each database has a checkbox. You can de-select a database by clicking in the checkbox; you can re-select a database by clicking in an empty checkbox. Some features are required for CCC Pathways to function properly. Required features cannot be de-selected (e.g., Standard Database).
- 4 Read the Description information for each selection you make. It will tell you about the database and list the hard drive space required.
- 5 When you are satisfied with your database selections, click the Next button.

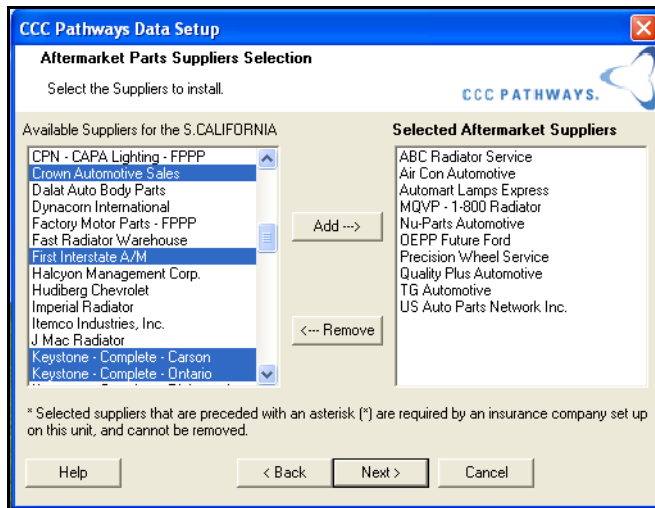
If you have purchased the Aftermarket Parts Suppliers database, the Reconditioned Parts Suppliers database, and/or the Optional OEM parts database then the program will display the Alternate Parts Database Region Selection screen.



Alternate Parts Database Region Selection

- 6 Select a region from the Aftermarket Parts Suppliers Region droplist. (This droplist will only be visible if you purchased the database.)
- 7 Select a region from the Reconditioned Parts Suppliers Region droplist. (This droplist will only be visible if you purchased the database.)
- 8 Select a region from the Optional OEM Parts Suppliers Region droplist. (This droplist will only be visible if you purchased the database.)
- 9 Read the text in the Alternate Parts Database Region Selection descriptions. Verify that your state appears in the Region. Then click Next.

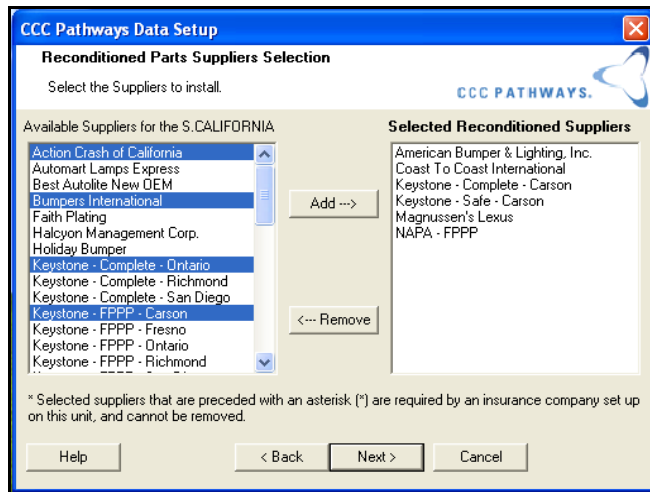
If you have purchased the Aftermarket Parts database, the program will display the Aftermarket Parts Suppliers Selection screen.



Aftermarket Parts Suppliers Selection screen

- 10 Highlight a supplier from the Available Suppliers for the Region list (The name of the region is determined on the Alternate Parts Database Region Selection screen.). You can highlight multiple suppliers by holding down your Ctrl key and clicking on each supplier.
- 11 Click the Add button to move your selection(s) into the Selected Aftermarket Suppliers list.
- 12 Repeat the process for any additional suppliers you want to select.
- 13 If you select a supplier by mistake, highlight the supplier in the Selected Aftermarket Suppliers list, and click the Remove button to de-select the supplier.
- 14 When you see all your selected suppliers in the Selected Aftermarket Suppliers list, click Next.

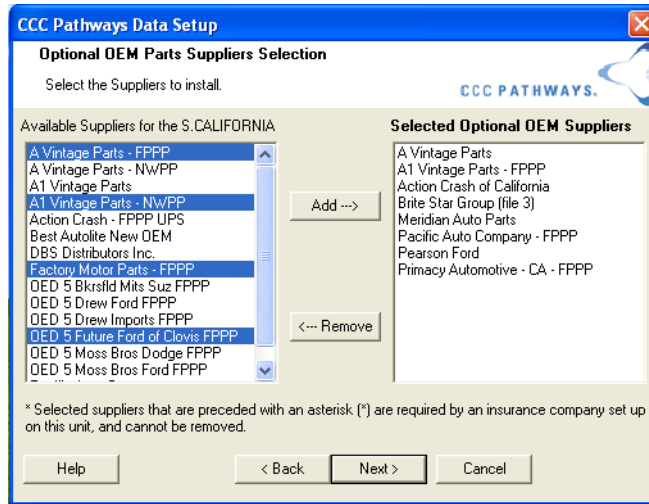
If you have purchased the Reconditioned Parts database, the program will display the Reconditioned Parts Suppliers Selection screen.



Reconditioned Parts Suppliers Selection

- 15 Highlight a supplier from the Available Suppliers for the Region list (The name of the region is determined on the Alternate Parts Database Region Selection screen.). You can highlight multiple suppliers by holding down your Ctrl key and clicking on each supplier.
- 16 Click the Add button to move your selection(s) into the Selected Reconditioned Suppliers list.
- 17 Repeat the process for any additional suppliers you want to select.
- 18 If you select a supplier by mistake, highlight the supplier in the Selected Reconditioned Suppliers list, and click the Remove button to de-select the supplier.
- 19 When you see all your selected suppliers in the Selected Reconditioned Suppliers list, click Next.

If you have purchased the Optional OEM database, the program will display the Optional OEM Parts Suppliers Selection screen.



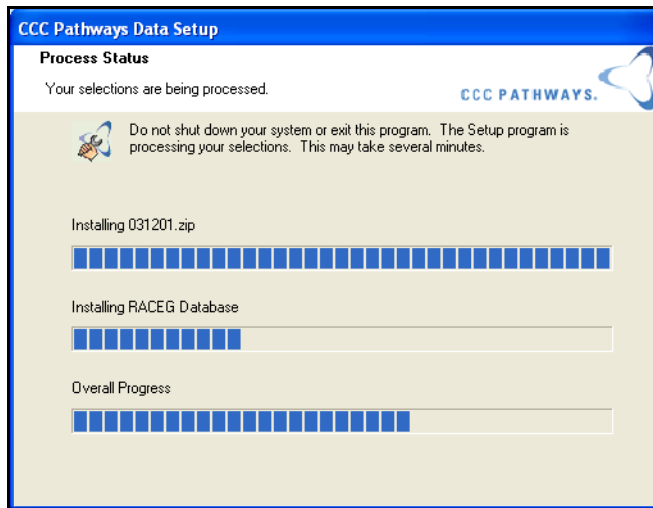
Optional OEM Parts Suppliers Selection screen

- 20 Highlight a supplier from the Available Suppliers for the Region list (The name of the region is determined on the Alternate Parts Database Region Selection screen.). You can highlight multiple suppliers by holding down your Ctrl key and clicking on each supplier.
- 21 Click the Add button to move your selection(s) into the Selected Optional OEM Suppliers list.
- 22 Repeat the process for any additional suppliers you want to select.
- 23 If you select a supplier by mistake, highlight the supplier in the Selected Optional OEM Suppliers list, and click the Remove button to de-select the supplier.
- 24 When you see all your selected suppliers in the Selected Optional OEM Suppliers list, click Next.
- 25 The Ready to Install/Update CCC Pathways Data screen appears. Click Continue.

Important! If you do not have enough disk space to complete the update, you will see the Data Setup Failed screen. The message will notify you of the amount of disk space required.

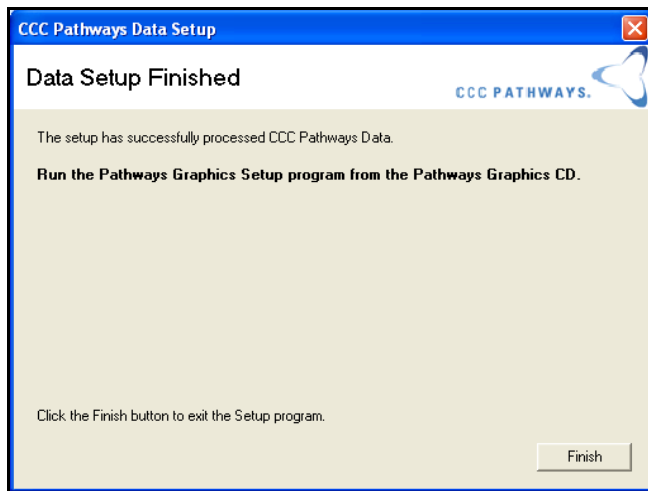
Make a note of the amount of disk space, then click Exit. Free up some hard drive space on the drive on which you want to install, then restart the update.

- 26 The Process Status screen appears. A series of progress bars keep you informed of the installation progress.



Process Status screen

- 27 When the setup is complete, the Data Setup Finished screen appears. Click Finish to exit. You do not need to reboot your computer.



Data Setup Finished screen

Updating the CCC Pathways Graphics Disc

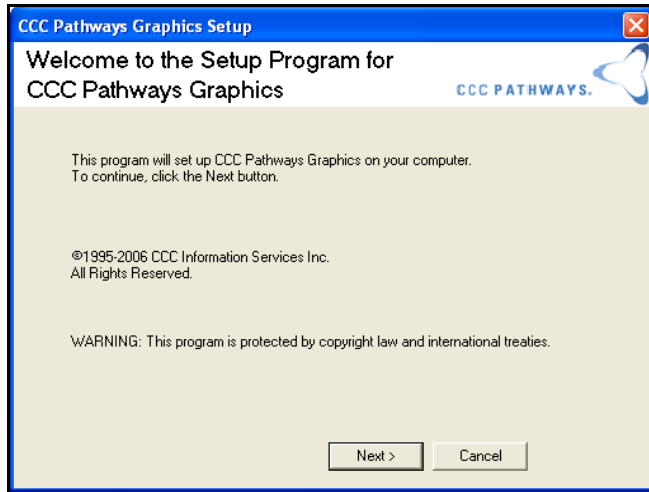
Follow these procedures to update the CCC Pathways graphics on your hard drive. The CCC Pathways Graphics Disc installs the MOTOR graphics for CCC Pathways. You will receive a new CCC Pathways Graphics Disc each month, as part of the CCC Pathways Monthly Update program.

Note If you have chosen to access graphics directly from the CCC Pathways Graphics Disc, keep the CCC Pathways Graphics Disc in your CD-ROM drive when you work with CCC Pathways. (The program automatically looks for graphics on the CD-ROM drive of stand-alone systems which do not have graphics loaded on the hard drive.)

Important! You must run the update of the most recent CCC Pathways Data Disc before you run the CCC Pathways Graphics update.

To update CCC Pathways Graphics

- 1 Insert the CD labeled CCC Pathways Graphics Disc into your CD-ROM drive.
- 2 Open the Start menu, and select the Run option.
- 3 In the Open field type **d:\setup.exe** and press Enter. (If your CD-ROM drive is assigned a letter other than d, replace d with the appropriate letter.)
- 4 The program checks to make sure that you have already run the most recent CCC Pathways Data Disc. If you have not, you will see an error message, you will be prevented from continuing with the installation of the Graphics Disc.
- 5 The program checks to make sure that CCC Pathways is not running. If the program is running, you will get an error message that automatically ends the setup program when you click OK. Close CCC Pathways, and restart the Pathways Graphics Disc update.
- 6 The program displays the Welcome to the Setup Program for CCC Pathways Graphics screen. Read the screen, and when you are ready to continue with the update, select the Next button.

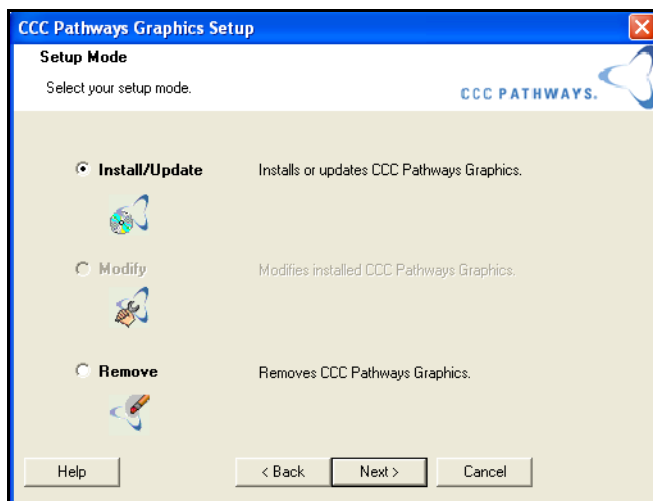


Welcome to the Setup Program for CCC Pathways Graphics screen

Setup Mode

The Setup Mode screen displays with Install/Update pre-selected. Click Next.

Note You can also choose Modify or Remove. Modify will modify installed CCC Pathways graphics. Remove will remove CCC Pathways graphics.

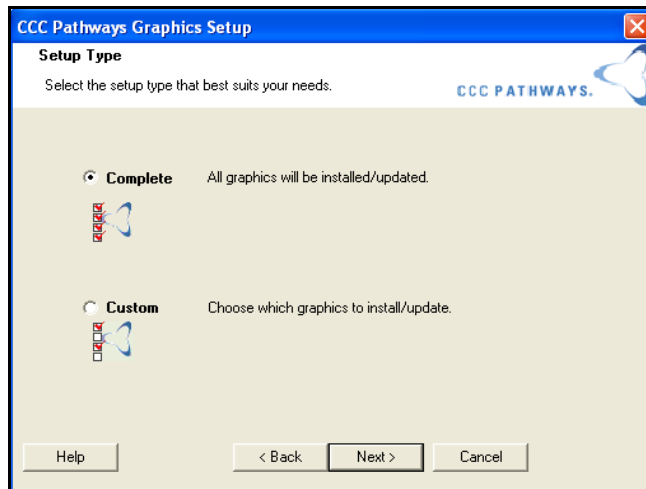


Setup Mode - Install/Update

Setup Type

At this point in the update process, the Setup Type screen appears, and you'll be asked whether you want a Complete or a Custom installation. Choose the setup type that best suits your needs.

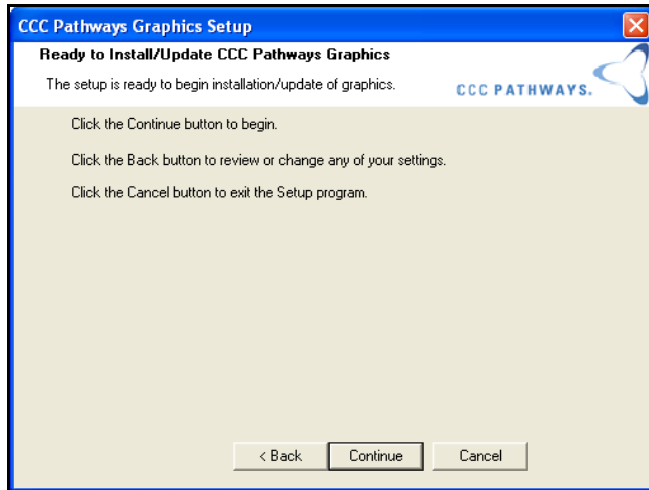
- **Complete** - This type of update will install all graphics.
- **Custom** - This type of update lets you choose which graphics you want to install.



Setup Type - Complete

The Complete Update

- 1 Select Complete on the Setup Type screen, and click Next. All graphics libraries will be installed.
- 2 The Ready to Install/Update CCC Pathways Graphics screen appears. Click Continue.

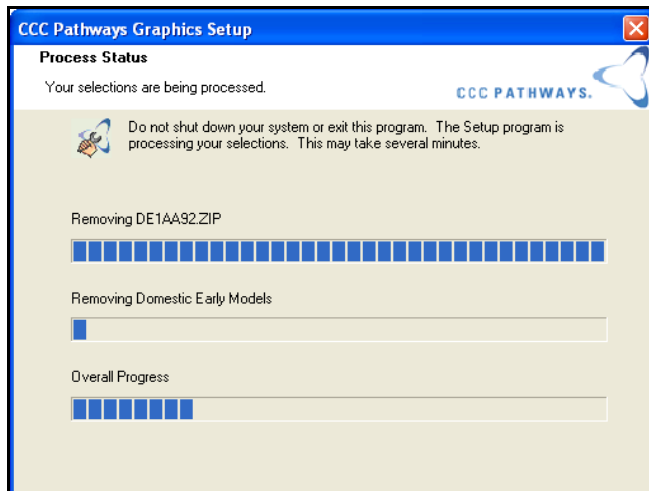


Ready to Install/Update CCC Pathways Graphics screen

Important! If you do not have enough disk space to complete the update, you will see the Graphics Setup Failed screen. The message will notify you of the amount of disk space required.

Make a note of the amount of disk space, then click Exit. Free up some hard drive space on the drive on which you want to install, then restart the update.

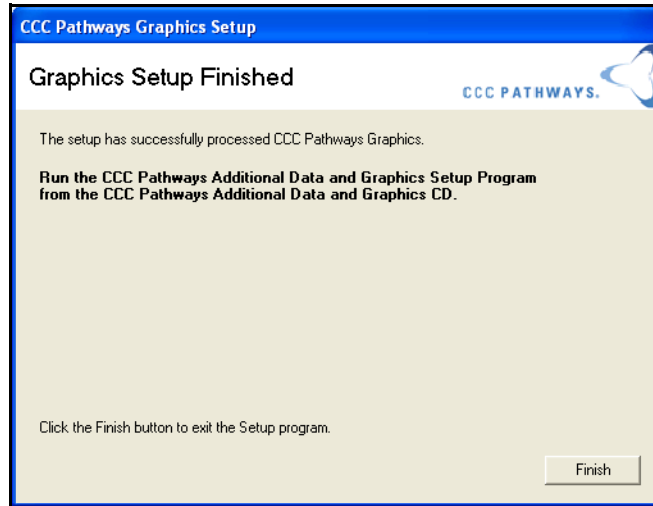
- 3 The Process Status screen appears. A series of progress bars keep you informed of the update progress.



Process Status screen

- 4 When the setup is complete, the Graphics Setup Finished screen appears. Click Finish to exit. You do not need to reboot your computer.

Note If you have purchased Chief Vehicle Specifications, you will see a reminder to run the CCC Pathways Additional Data and Graphics Setup Program.

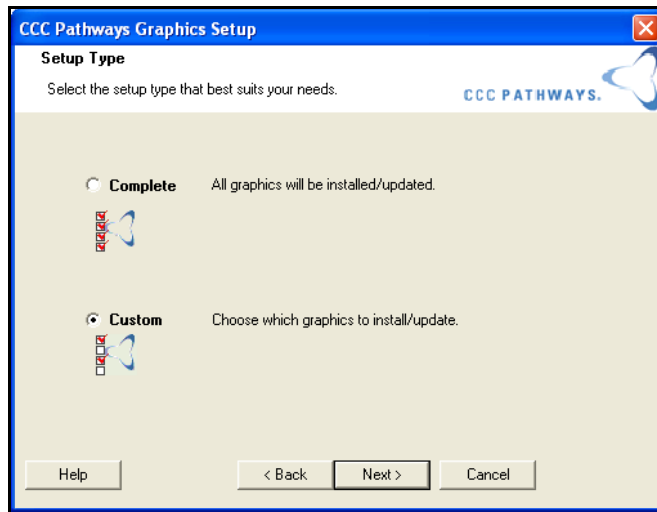


Graphics Setup Finished screen

The Custom Installation

The Custom Installation lets you select which graphic databases you want to install.

- 1 Select Custom on the Setup Type screen, and click Next.
- 2 The Custom Setup screen displays. Use this screen to select the graphic databases you want installed.
- 3 Each database has a checkbox. You can de-select a database by clicking in the checkbox; you can re-select a database by clicking in an empty checkbox.
- 4 Read the Description information for each selection you make. It will tell you about the database and list the hard drive space required.



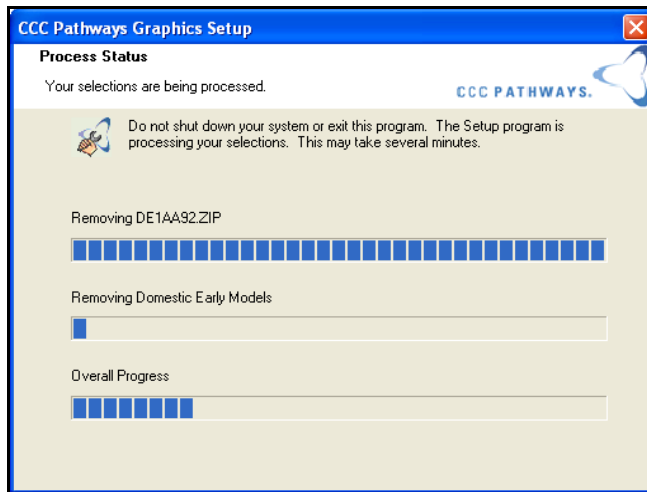
Custom Setup screen

- 5 When you are satisfied with your database selections, click the Next button.
- 6 The Ready to Install/Update CCC Pathways Graphics screen appears. Click Continue.

Important! If you do not have enough disk space to complete the installation, you will see the Graphics Setup Failed screen. The message will notify you of the amount of disk space required.

Make a note of the amount of disk space, then click Exit. Free up some hard drive space on the drive on which you want to install, then restart the installation.

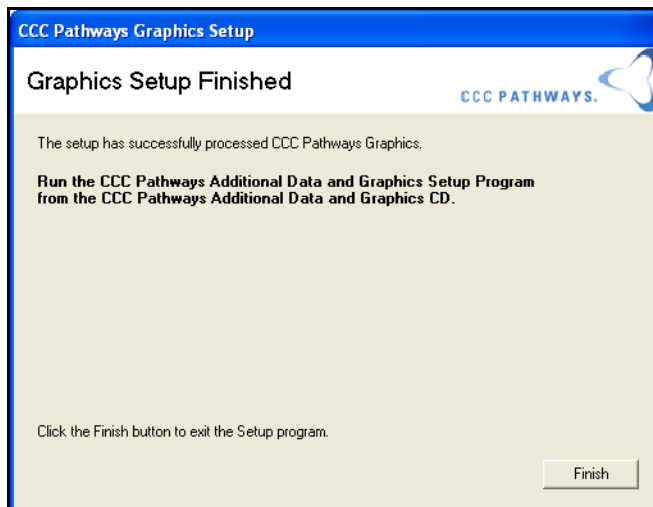
- 7 The Installing Pathways Graphics screen appears. A progress bar keeps you informed of the installation progress.



Process Status screen

- 8 When the setup is complete, the Graphics Setup Finished screen appears. Click Finish to exit. You do not need to reboot your computer.

Note If you have purchased Chief Vehicle Specifications, you will see a reminder to run the CCC Pathways Additional Data and Graphics Setup Program.



Graphics Setup Finished screen

Updating the CCC Pathways Additional Data and Graphics Disc

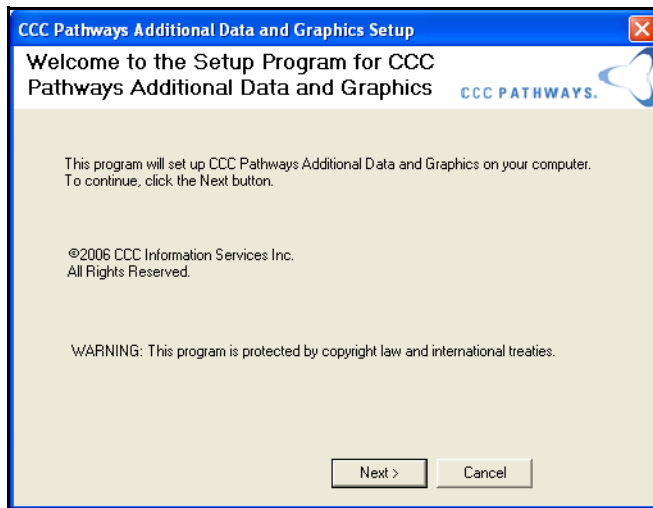
Follow these procedures to update the CCC Pathways Additional Data and Graphics on your hard drive. The Additional Data and Graphics Disc contains Chief Vehicle Specifications, an optional feature.

Important! If you have not purchased one or both of these options, you will not be able to install the Additional Data and Graphics Disc.

You will receive a new Additional Data and Graphics Disc each month, as part of the CCC Pathways Monthly Update program.

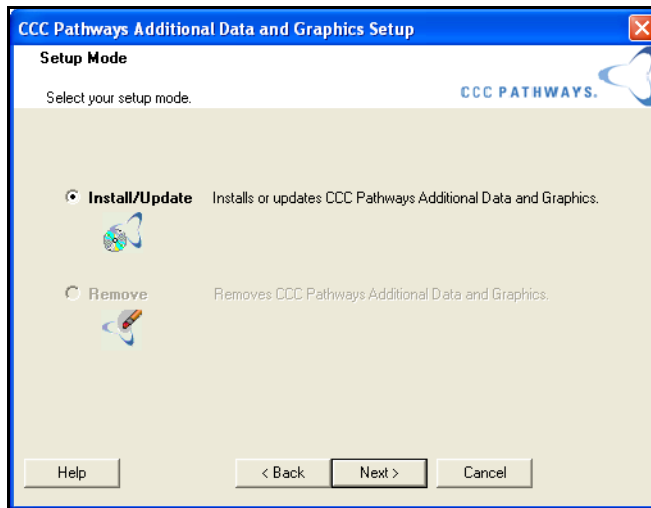
To update the Additional Data and Graphics Disc

- 1 Insert the CD labeled CCC Pathways Additional Data and Graphics Disc into your CD-ROM drive.
- 2 Open the Start menu, and select the Run option.
- 3 In the Open field type **d:\setup.exe** and press Enter. (If your CD-ROM drive is assigned a letter other than d, replace d with the appropriate letter.)
- 4 The program checks to make sure you have purchased Chief Frame Specifications. If you have not, you will see an error message, you will be prevented from continuing with the update of the Additional Data and Graphics Disc.



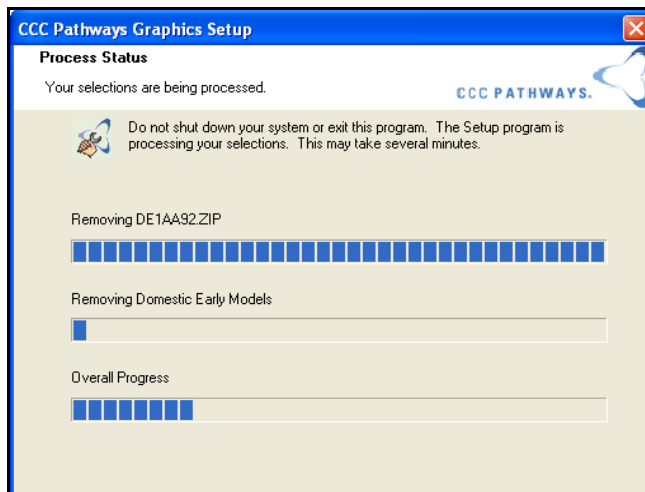
The Additional Data and Graphics Welcome screen

- 5 The program displays the Welcome screen for CCC Pathways Additional Data and Graphics. Click Next.



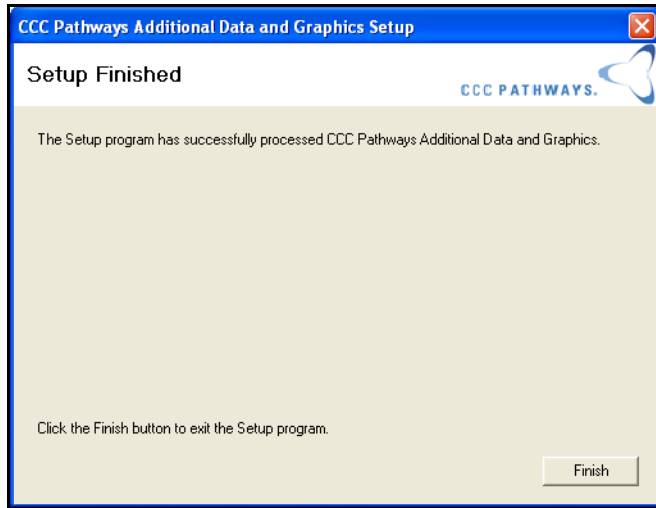
Setup Mode - Install/Update is pre-selected

- 6 The Setup Mode screen displays with Install/Update pre-selected. Click Next.
- 7 The Installing Pathways Graphics screen appears. A progress bar keeps you informed of the installation progress.



Process Status screen

- 8 When the update is complete, the Setup Finished screen displays.



Setup Finished

Click Finish.

